

(TERPZ7.TERPZ) 20086

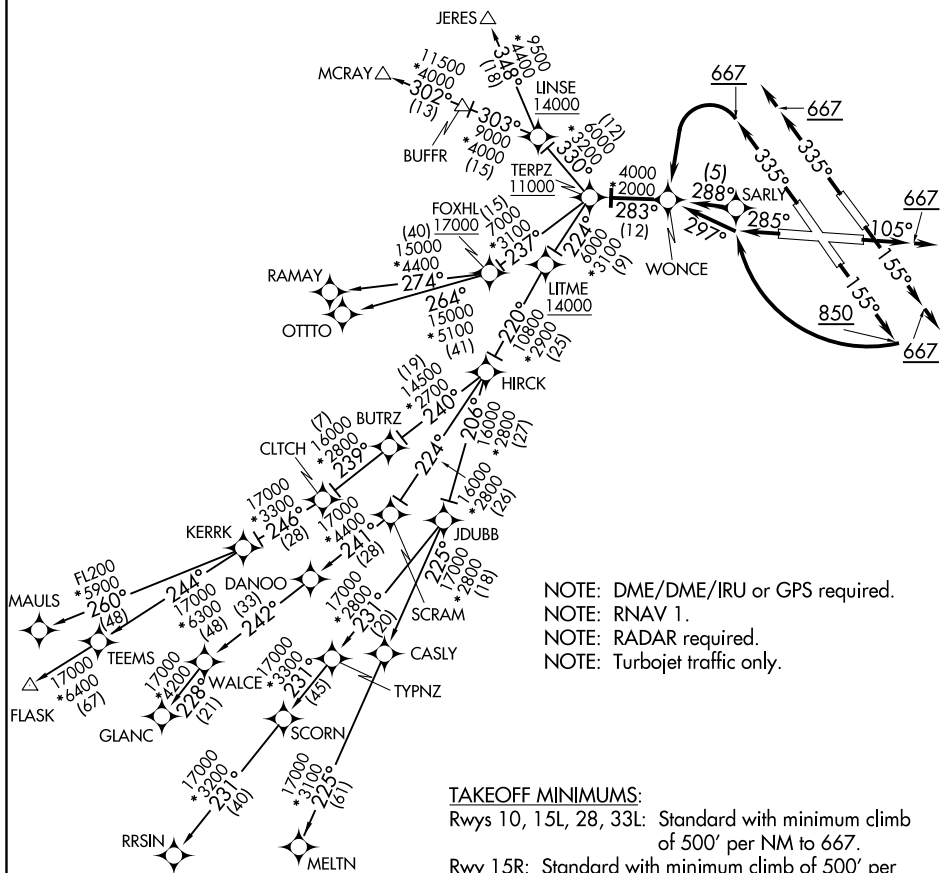
TERPZ SEVEN DEPARTURE (RNAV)

BALTIMORE/
WASHINGTON INTL THURGOOD MARSHALL (BWI)
BALTIMORE, MARYLAND

AL-804

D-ATIS
115.1 127.8
CLNC DEL
118.05
CPDLC
GND CON
121.9
BALTIMORE TOWER
119.4 257.8
POTOMAC DEP CON
128.7 307.9

**TOP ALTITUDE:
RAMAY, OTTTO, MAULS, FLASK,
RRSIN, GLANC, MELTN
TRANSITIONS: 17000
JERES, MCRAY TRANSITIONS:
16000**



NOTE: DME/DME/IRU or GPS required.
NOTE: RNAV 1.
NOTE: RADAR required.
NOTE: Turbojet traffic only.

TAKEOFF MINIMUMS:

Rwys 10, 15L, 28, 33L: Standard with minimum climb
of 500' per NM to 667.
Rwy 15R: Standard with minimum climb of 500' per
NM to 4000.
Rwy 33R: Standard with minimum climb of 500' per
NM to 800.

(NARRATIVE ON FOLLOWING PAGE)
(NOTES CONTINUED ON FOLLOWING PAGE)

NOTE: Chart not to scale.

TERPZ SEVEN DEPARTURE (RNAV)
(TERPZ7.TERPZ) 26MAR20

BALTIMORE/
WASHINGTON INTL THURGOOD MARSHALL (BWI)
BALTIMORE, MARYLAND

NE-3, 25 FEB 2021 to 25 MAR 2021

NE-3, 25 FEB 2021 to 25 MAR 2021