

LOC/DME I-BYH <b>110.3</b> Chan <b>40</b>	APP CRS <b>181°</b>	Rwy Idg <b>11602</b> TDZE <b>250</b> Apt Elev <b>254</b>
---	------------------------	--

# ILS or LOC RWY 18

ARKANSAS INTL (BYH)

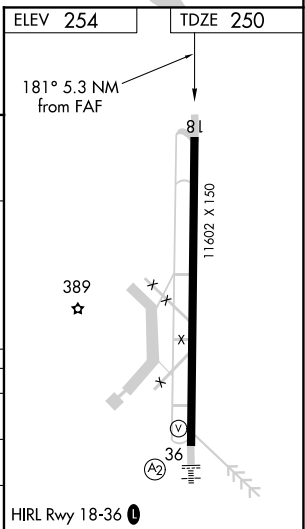
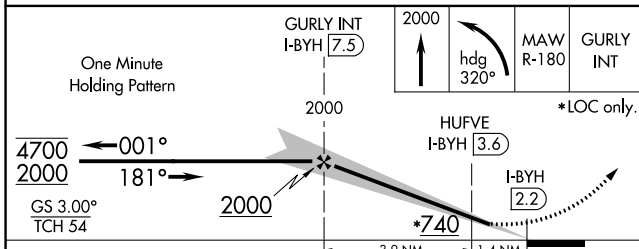
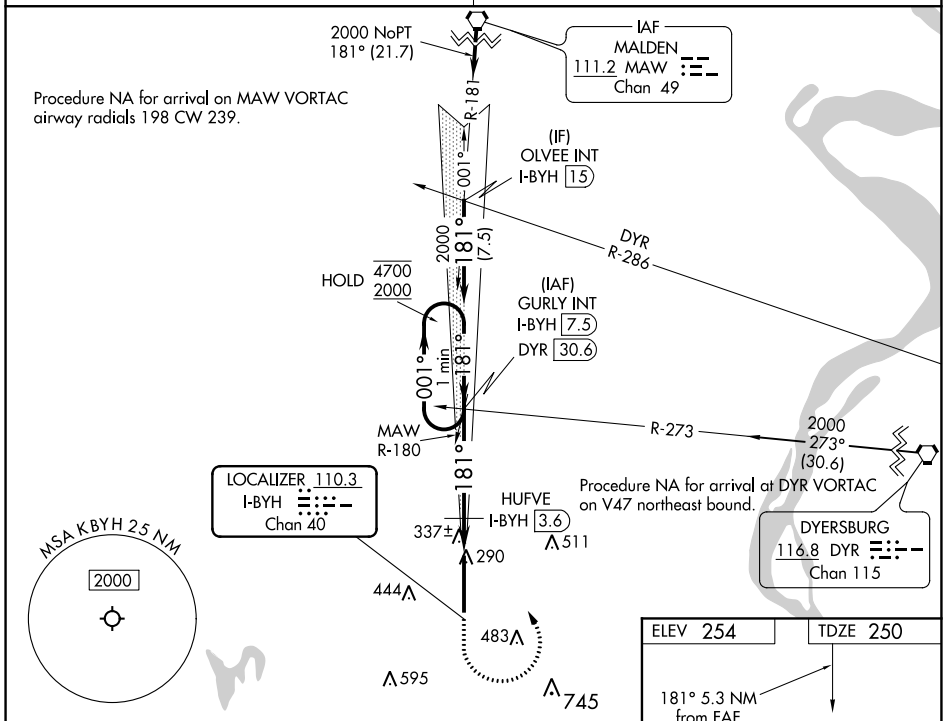
DME required for LOC only.  
DME required for DYR VORTAC to GURLY transition.

**▽** Circling NA east of Rwy 18 and 36. Obtain local altimeter setting on CTAF, when not received, use Blytheville Muni altimeter setting and increase DA to 464 feet and all MDAs 20 feet.

**△NA**

MISSED APPROACH: Climb to 2000, then left turn heading 320° and MAW VORTAC R-180 to GURLY INT and hold.

MEMPHIS CENTER <b>134.65 316.15</b>	UNICOM <b>122.7 (CTAF) 0</b>
--	---------------------------------



CATEGORY	A	B	C	D
S-ILS 18		450-3/4	200 (200-3/4)	
S-LOC 18		600-1	350 (400-1)	
<b>C</b> CIRCLING	700-1 446 (500-1)	720-1 466 (500-1)	800-1 1/2 546 (600-1 1/2)	820-2 566 (600-2)

SC-1, 25 FEB 2021 to 25 MAR 2021

SC-1, 25 FEB 2021 to 25 MAR 2021