

WAAS CH <b>78318</b> <b>W36A</b>	APP CRS <b>001°</b>	Rwy ldg <b>11602</b> TDZE <b>254</b> Apt Elev <b>254</b>
--	------------------------	--

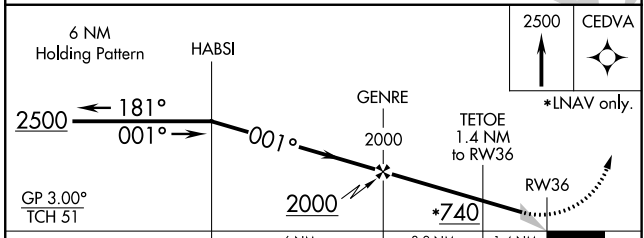
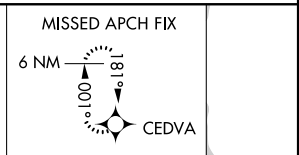
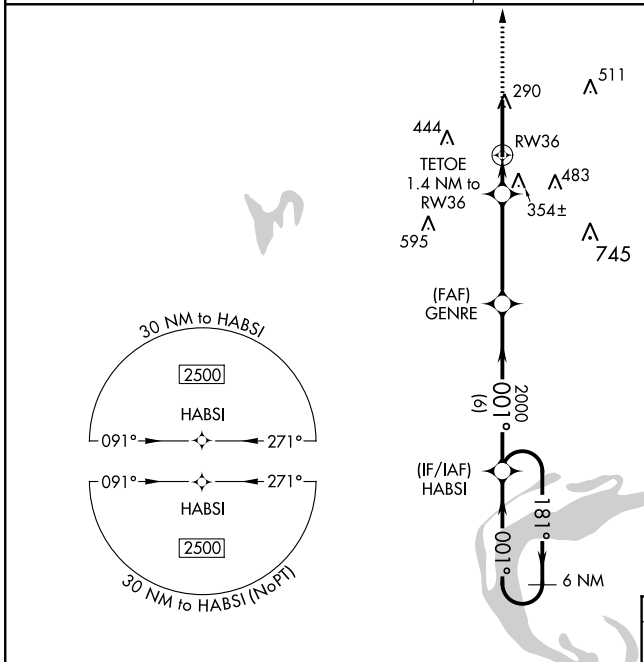
# RNAV (GPS) RWY 36

ARKANSAS INTL (BYH)

**▽** Inop table does not apply. Baro-VNAV NA when using Blytheville Muni altimeter setting. For uncompensated Baro-VNAV systems, LNAV/VNAV NA below -1.5°C (5°F) or above 54°C (130°F). Circling NA east of Rwy 18-36. DME/DME RNP-0.3 NA. Obtain local altimeter setting on CTAF; when not received, use Blytheville Muni altimeter setting and increase all DA 14 feet and all MDA 20 feet. Increase LNAV/VNAV all Cats and LNAV Cat C/D visibility 1/8 mile.

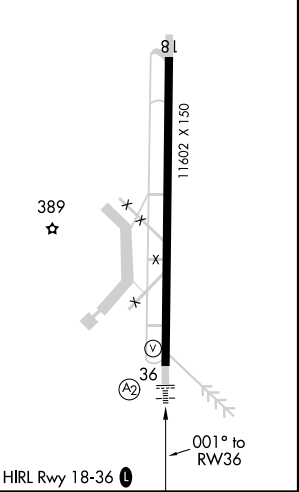
**SALS**  
**MISSED APPROACH:**  
Climb to 2500 direct CEDVA and hold.

MEMPHIS CENTER **134.65 316.15** UNICOM **122.7 (CTAF)**



ELEV 254 TDZE 254

CATEGORY	A	B	C	D
LPV DA		454-3/4	200 (200-3/4)	
LNAV/VNAV DA		537-1	283 (300-1)	
LNAV MDA		620-1	366 (400-1)	
<b>CIRCLING</b>	700-1 446 (500-1)	720-1 466 (500-1)	800-1½ 546 (600-1½)	820-2 566 (600-2)



SC-1, 25 FEB 2021 to 25 MAR 2021

SC-1, 25 FEB 2021 to 25 MAR 2021