

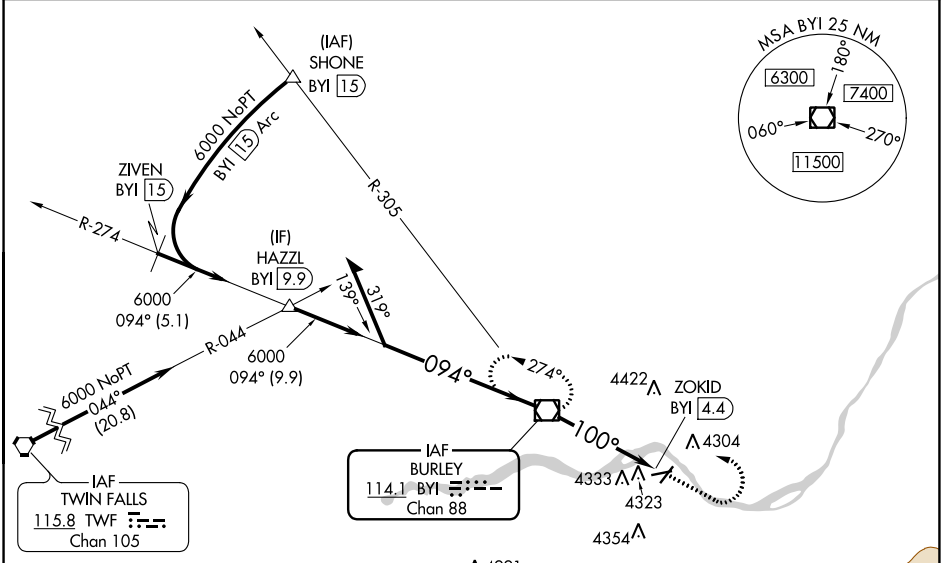
| | | | |
|---|------------------------|---|---|
| VOR/DME BYI 114.1 Chan 88 | APP CRS 100° | Rwy Idg TDZE Apt Elev 4154 | N/A N/A 4154 |
|---|------------------------|---|---|

VOR-A
BURLEY MUNI (BYI)

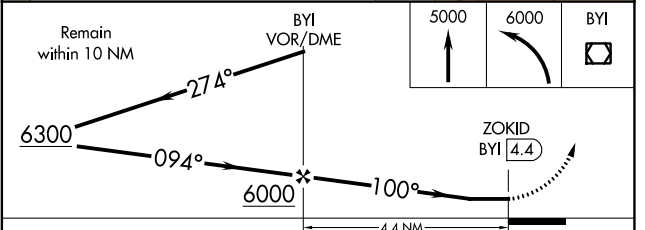
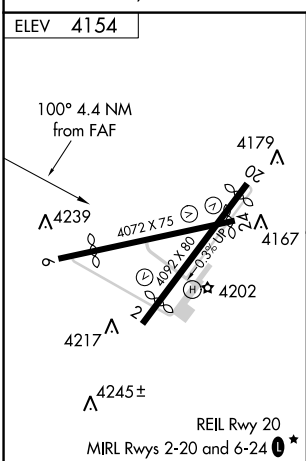
⚠ Circling Rwy 2, 20, 24 NA at night. Rwy 2, 20, 24 helicopter visibility reduction below 1 SM NA. When local altimeter setting not received, use Twin Falls altimeter setting and increase all MDAs 80 feet and visibility Cats C and D ¼ SM.

⚠ MISSED APPROACH: Climb to 5000 then climbing left turn to 6000 direct BYI VOR/DME and hold.

| | | |
|------------------------|---|-------------------------|
| ASOS 135.575 | TWIN FALLS APP CON ★ 126.7 353.75 | CTAF 122.90 ★ |
|------------------------|---|-------------------------|



Procedure NA for arrival on TWF
VORTAC airway radials 349 CW 097.



| FAF to MAP 4.4 NM | | | | | CATEGORY | A | B | C | D |
|-------------------|------|------|------|------|----------|-------------|-------------|--------------|-------------|
| Knots | 60 | 90 | 120 | 150 | 180 | 4640-1 | 4660-1 | 4740-1½ | 4780-2 |
| Min:Sec | 4:24 | 2:56 | 2:12 | 1:46 | 1:28 | 486 (500-1) | 506 (600-1) | 586 (600-1½) | 626 (700-2) |

NW-1, 25 FEB 2021 to 25 MAR 2021

NW-1, 25 FEB 2021 to 25 MAR 2021