

# BLTWY SIX DEPARTURE (RNAV)

CTAF  
122.8  
HOUSTON CENTER  
128.6 360.85

**TOP ALTITUDE:  
ASSIGNED BY ATC**

NOTE: RADAR required.  
NOTE: DME/DME/IRU or GPS required.  
NOTE: RNAV 1.

TAKEOFF MINIMUMS  
Rwys 13, 31: Standard with minimum  
climb of 500' per NM to 560.

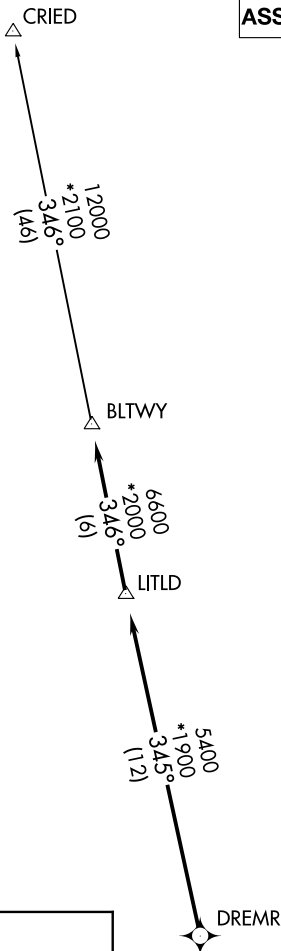
## DEPARTURE ROUTE DESCRIPTION

TAKEOFF RWY 13: Climb heading 131° or as assigned by ATC for RADAR vectors to DREMR, thence . . .

TAKEOFF RWY 31: Climb heading 311° or as assigned by ATC for RADAR vectors to DREMR, thence . . .

...on track 345° to LITLD, then on track 346° to BLTWY, then on (transition). Maintain ATC assigned altitude. Expect filed altitude 10 minutes after departure.

CRIED TRANSITION (BLTWY6.CRIED)



NOTE: Chart not to scale.

# BLTWY SIX DEPARTURE (RNAV)

(BLTWY6.BLTWY) 25APR19