

(STYCK7.STYCK) 19283

AL-5824 (FAA)

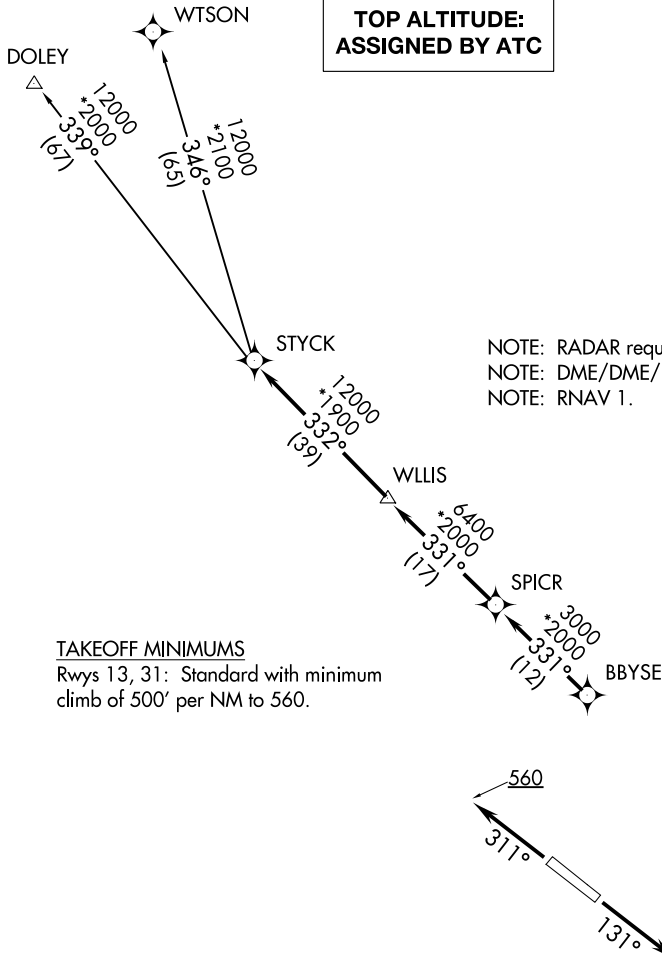
BAY CITY RGNL (BY Y)

# STYCK SEVEN DEPARTURE (RNAV)

BAY CITY, TEXAS

**TOP ALTITUDE:  
ASSIGNED BY ATC**

AWOS-3  
118.075  
CTAF  
122.8  
HOUSTON DEP CON  
128.6 360.85



NOTE: RADAR required.  
NOTE: DME/DME/IRU or GPS required.  
NOTE: RNAV 1.

### TAKEOFF MINIMUMS

Rwys 13, 31: Standard with minimum climb of 500' per NM to 560.

NOTE: Chart not to scale.



### DEPARTURE ROUTE DESCRIPTION

TAKEOFF RWY 13: Climb heading 131° to 560 for RADAR vectors to BBYSE, thence. . . .

TAKEOFF RWY 31: Climb heading 311° to 560 for RADAR vectors to BBYSE, thence. . . .

. . . .on track 331° to SPICR, then on track 331° to WLLIS, then on track 332° to STYCK, then on (transition). Maintain ATC assigned altitude. Expect filed altitude 10 minutes after departure.

DOLEY TRANSITION (STYCK7.DOLEY)

WTSON TRANSITION (STYCK7.WTSON)

# STYCK SEVEN DEPARTURE (RNAV)

(STYCK7.STYCK) 25APR19

BAY CITY, TEXAS

BAY CITY RGNL (BY Y)

SC-5, 25 FEB 2021 to 25 MAR 2021

SC-5, 25 FEB 2021 to 25 MAR 2021