

LOC/DME I-MAY <b>108.55</b> Chan 22	APP CRS <b>070°</b>	Rwy Idg TDZE Apt Elev	<b>5000</b> <b>1307</b> <b>1307</b>
---	------------------------	-----------------------------	---

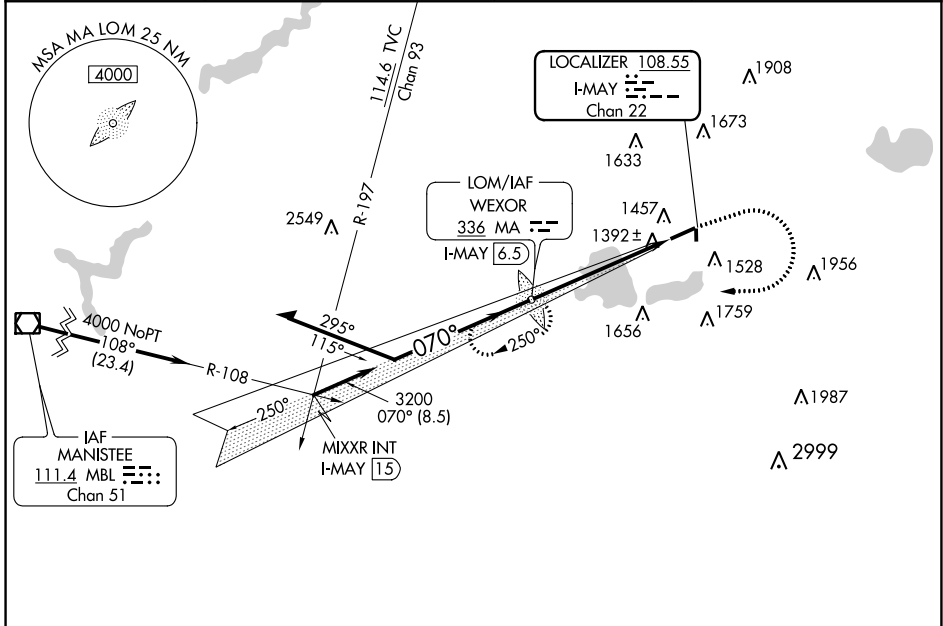
# ILS or LOC RWY 7

WEXFORD COUNTY (CAD)

**NA** ADF Required. When local altimeter setting not received, use Houghton Lake altimeter setting and increase all DA 137 feet and all MDA 140 feet and increase S-ILS 7 all Cats visibility ½ mile, S-LOC 7 visibility Cat C ½ mile and Cat D ¼ mile, Circling visibility Cat C ½ mile and Cat D ¼ mile. Inoperative table does not apply to S-LOC 7 Cat C visibility when using Houghton Lake altimeter setting.

**MALSF** MISSED APPROACH: Climb to 2100, then climbing right turn to 3200 direct WEXOR LOM I-MAY 6.5 DME and hold.

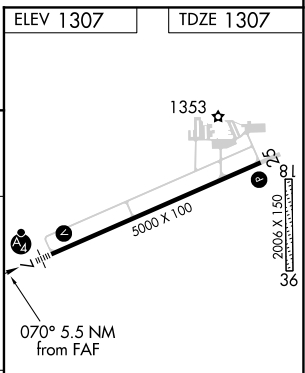
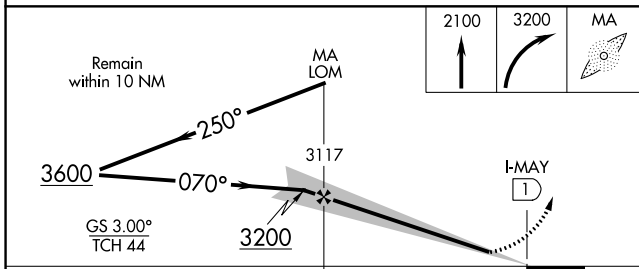
AWOS-3 <b>128.325</b>	MINNEAPOLIS CENTER <b>132.9 338.3</b>	GCO <b>121.725</b>	UNICOM <b>122.8 (CTAF)</b>
--------------------------	--	-----------------------	-------------------------------



EC-1, 25 FEB 2021 to 25 MAR 2021

EC-1, 25 FEB 2021 to 25 MAR 2021

ELEV 1307	TDZE 1307
-----------	-----------



CATEGORY	A	B	C	D
S-ILS 7		1507-¾	200 (200-¾)	
S-LOC 7		1660-¾ 353 (400-¾)		1660-1¼ 353 (400-1¼)
CIRCLING	1900-1 593 (600-1)		1900-1½ 593 (600-1½)	1900-2 593 (600-2)

HIRL Rwy 7-25	REIL Rwy 7 and 25
FAF to MAP 5.5 NM	
Knots	60 90 120 150 180
Min:Sec	5:30 3:40 2:45 2:12 1:50