

WAAS CH 97513 W25A	APP CRS 250°	Rwy Idg TDZE 1305 Apt Elev 1307
--	------------------------	---

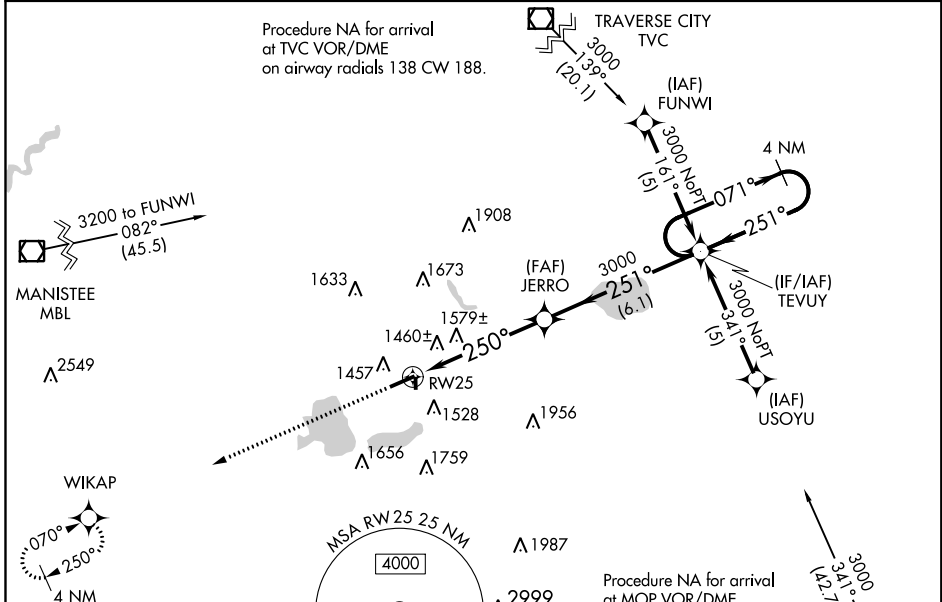
RNAV (GPS) RWY 25

WEXFORD COUNTY (CAD)

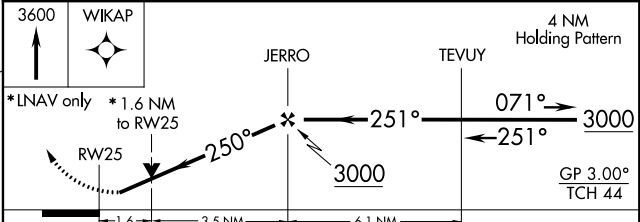
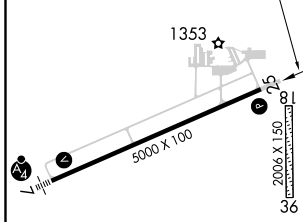
⚠ DME/DME RNP-0.3 NA. Visibility reduction by helicopters NA. For uncompensated Baro-VNAV systems, LNAV/VNAV NA below -17°C (2°F) or above 46°C (114°F).
⚠ Baro-VNAV and VDP NA when using Houghton Lake altimeter setting. When local altimeter setting not received, use Houghton Lake altimeter setting and increase all DA 137 feet, all MDA 140 feet, LPV and LNAV/VNAV visibilities all Cats ½ mile, LNAV visibilities Cats C and D ½ mile, Circling visibilities Cat C ½ mile and Cat D ¼ mile.

MISSED APPROACH: Climb to 3600 direct WIKAP and hold.

AWOS-3 128.325	MINNEAPOLIS CENTER 132.9 338.3	GCO 121.725	UNICOM 122.8 (CTAF) 0
--------------------------	--	-----------------------	---------------------------------



ELEV 1307	TDZE 1305
-----------	-----------



CATEGORY	4 NM Holding Pattern			
	A	B	C	D
LPV DA		1625-1¼	320 (400-1¼)	
LNAV/VNAV DA		1869-2	564 (600-2)	
LNAV MDA	1840-1	535 (600-1)	1840-1½ 535 (600-1½)	1840-1¾ 535 (600-1¾)
CIRCLING	1900-1	593 (600-1)	1900-1½ 593 (600-1½)	1900-2 593 (600-2)

EC-1, 25 FEB 2021 to 25 MAR 2021

EC-1, 25 FEB 2021 to 25 MAR 2021