

WAAS CH 40026 W23A	APP CRS 232°	Rwy Idg TDZE Apt Elev	7001 213 236
--	------------------------	-----------------------------	---

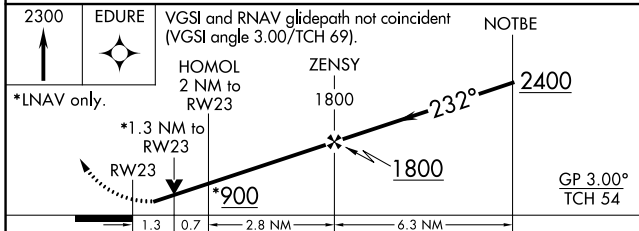
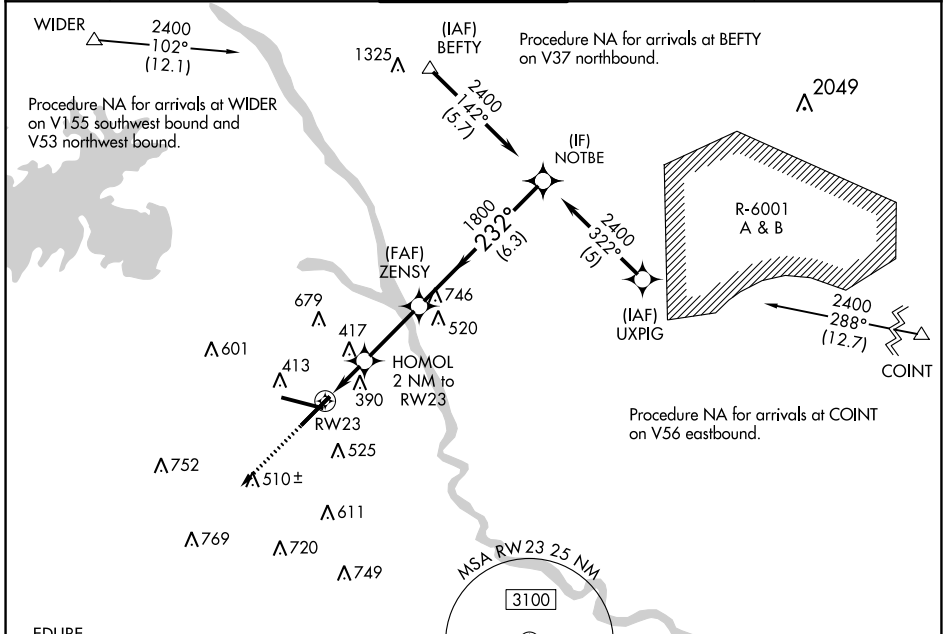
RNAV (GPS) RWY 23

COLUMBIA METROPOLITAN (CAE)

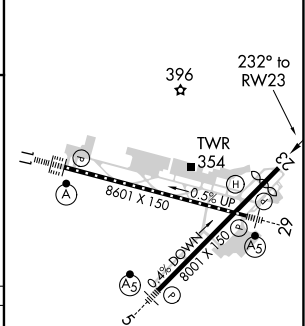
▼ For uncompensated Baro-VNAV systems, LNAV/VNAV NA below -1.5°C (5°F) or above 48°C (118°F). DME/DME RNP-0.3 NA. Rwy 23 helicopter visibility reduction below ¾ SM NA.

MISSED APPROACH: Climb to 2300 direct EDURE and hold.

ATIS 120.15	COLUMBIA APP CON 133.4 285.6 (290°-109°) 124.15 338.2 (110°-289°)	COLUMBIA TOWER 119.5 257.8	GND CON 121.9 348.6	CLNC DEL 119.75
-----------------------	---	--------------------------------------	-------------------------------	---------------------------



ELEV 236	TDZE 213
----------	----------



CATEGORY	A	B	C	D
LPV DA		503/50	290 (300-1)	
LNAV/VNAV DA		699-1¼	486 (500-1¼)	
LNAV MDA	680/50	467 (500-1)	680/60 467 (500-1¼)	680-1½ 467 (500-1½)
CIRCLING	740-1	504 (600-1)	840-1¼ 604 (700-1¼)	880-2 644 (700-2)

REIL Rwy 23
TDZ/CL Rwy 11
HIRL Rwy 5-23 and 11-29

SE-2, 25 FEB 2021 to 25 MAR 2021

SE-2, 25 FEB 2021 to 25 MAR 2021