

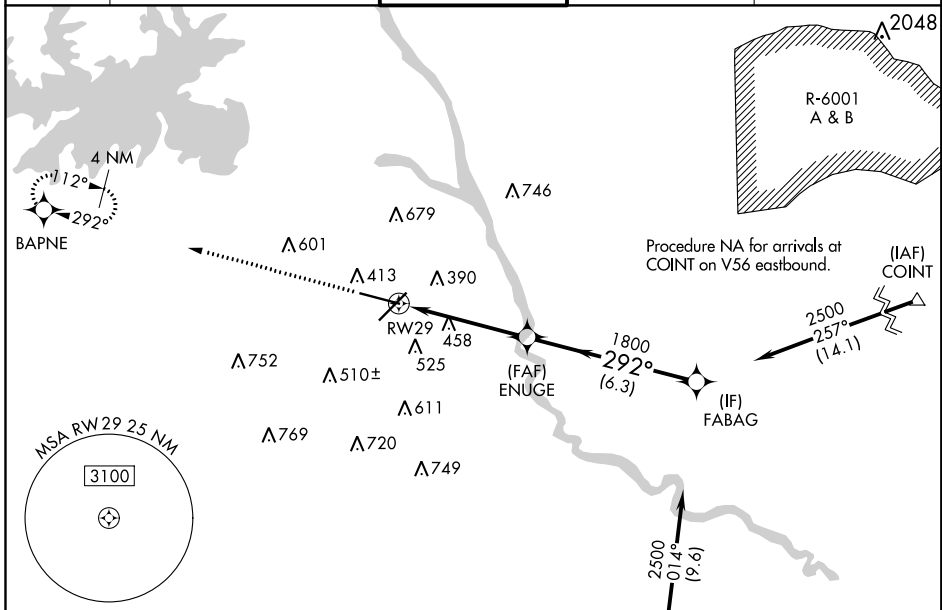
WAAS CH 53414 W29A	APP CRS 292°	Rwy Idg TDZE Apt Elev	8506 227 236
--	------------------------	-----------------------------	---

RNAV (GPS) RWY 29

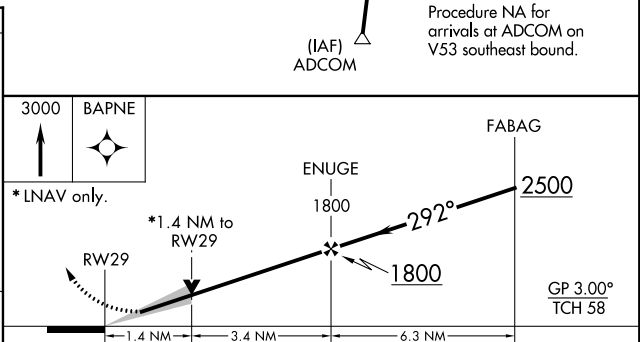
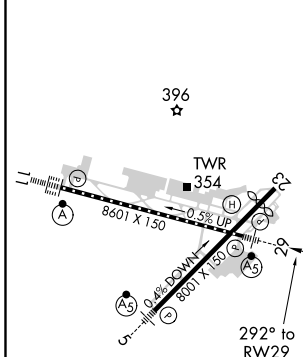
COLUMBIA METROPOLITAN (CAE)

<p>▼ For uncompensated Baro-VNAV systems, LNAV/VNAV NA below -1.5°C (5°F) or above 48°C (118°F). DME/DME RNP-0.3 NA. **RVR 1800 authorized with use of FD or AP or HUD to DA.</p>	<p>MALSR</p>	<p>MISSED APPROACH: Climb to 3000 direct BAPNE and hold.</p>

<p>ATIS 120.15</p>	<p>COLUMBIA APP CON 133.4 285.6 (290°-109°) 124.15 338.2 (110°-289°)</p>	<p>COLUMBIA TOWER 119.5 257.8</p>	<p>GND CON 121.9 348.6</p>	<p>CLNC DEL 119.75</p>
-------------------------------	--	--	---------------------------------------	-----------------------------------



ELEV 236	D	TDZE 227
----------	----------	----------



CATEGORY	A	B	C	D
LPV DA **	427/24 200 (200-½)			
LNAV/VNAV DA	544/24 317 (400-½)		544/40 317 (400-¾)	
LNAV MDA	720/24 493 (500-½)	720/40 493 (500-¾)		720/50 493 (500-1)
CIRCLING	740-1 504 (600-1)	840-1¾ 604 (700-1¾)		880-2 644 (700-2)

REIL Rwy 23
TDZ/CL Rwy 11
HIRL Rwy 5-23 and 11-29

SE-2, 25 FEB 2021 to 25 MAR 2021

SE-2, 25 FEB 2021 to 25 MAR 2021