


WAAS CH 58020 W19A	APP CRS 189°	Rwy Idg TDZE Apt Elev	7000 1218 1228
--	------------------------	-----------------------------	---

RNAV (GPS) RWY 19

AKRON-CANTON RGNL (CAK)

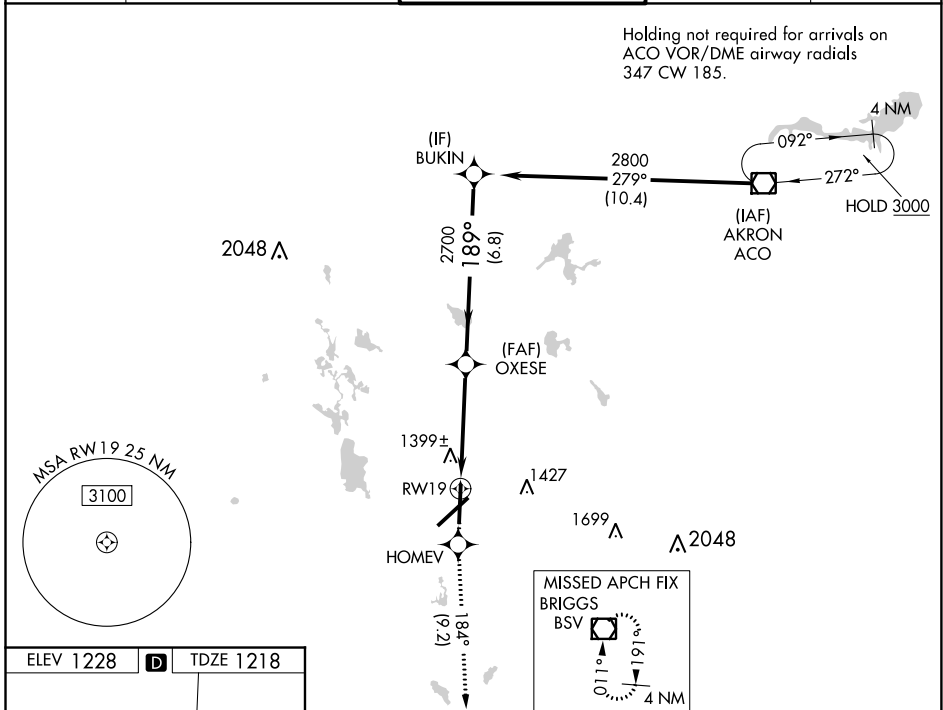
▼ For uncompensated Baro-VNAV systems, LNAV/VNAV NA below -17°C (2°F) or above 46°C (114°F). DME/DME RNP-0.3 NA.
 ** RVR 1800 authorized with use of FD or AP or HUD to DA.

MALSR 

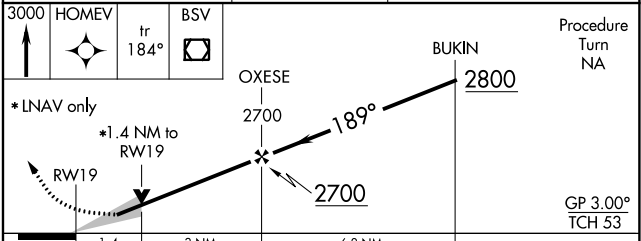
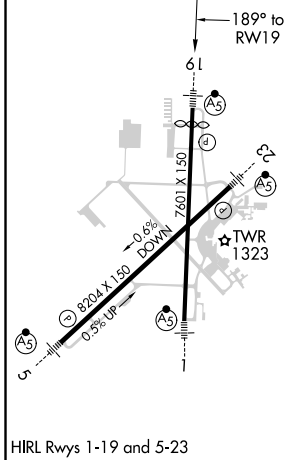
MISSED APPROACH: Climb to 3000 direct HOMEV and on track 184° to BSV VOR/DME and hold.

ATIS 121.05	CLEVELAND APP CON * 125.5 269.25	AKRON-CANTON TOWER 134.75 279.575	GND CON 121.7 348.6	CLNC DEL 132.05
-----------------------	--	---	-------------------------------	---------------------------

Holding not required for arrivals on ACO VOR/DME airway radials 347 CW 185.



ELEV 1228	D	TDZE 1218
-----------	----------	-----------



CATEGORY	A	B	C	D
LPV DA	**1418/24 200 (200-½)			
LNAV/VNAV DA	1753-1½ 535 (600-1½)			
LNAV MDA	1700/24	482 (500-½)	1700/40 482 (500-¾)	1700/50 482 (500-1)
CIRCLING	1760-1	532 (600-1)	1760-1½ 532 (600-1½)	1780-2 552 (600-2)

EC-2, 25 FEB 2021 to 25 MAR 2021

EC-2, 25 FEB 2021 to 25 MAR 2021