

WAAS CH 90220 W23A	APP CRS 235°	Rwy Idg TDZE Apt Elev	8204 1226 1228
--	------------------------	-----------------------------	---

RNAV (GPS) RWY 23

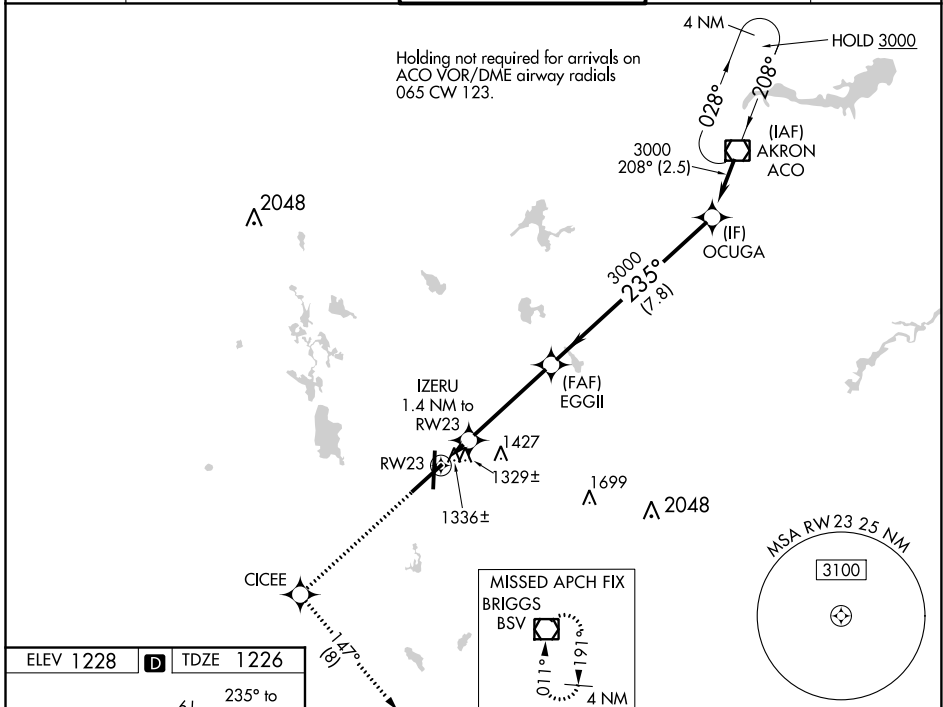
AKRON-CANTON RGNL (CAK)

▼ For uncompensated Baro-VNAV systems, LNAV/VNAV NA below -17°C (2°F) or above 46°C (114°F). DME/DME RNP-0.3 NA. For inoperative MALS, increase LNAV Cat D visibility to RVR 6000.
 ** RVR 1800 authorized with use of FD or AP or HUD to DA.

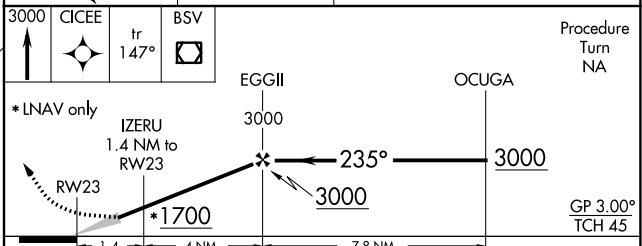
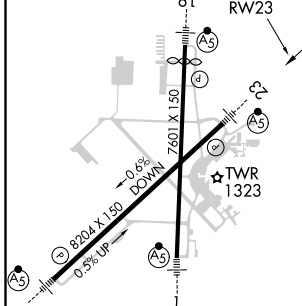


MISSED APPROACH: Climb to 3000 direct CICEE and on track 147° to BSV VOR/DME and hold.

ATIS 121.05	CLEVELAND APP CON* 125.5 269.25	AKRON-CANTON TOWER 134.75 279.575	GND CON 121.7 348.6	CLNC DEL 132.05
-----------------------	---	---	-------------------------------	---------------------------



ELEV 1228	D	TDZE 1226
-----------	----------	-----------



CATEGORY	A	B	C	D
LPV DA	**1426/24 200 (200-½)			
LNAV/VNAV DA	1691/60 465 (500-1¼)			
LNAV MDA	1640/24	414 (500-½)	1640/40 414 (500-¾)	1640/50 414 (500-1)
CIRCLING	1760-1	532 (600-1)	1760-1½ 532 (600-1½)	1780-2 552 (600-2)

EC-2, 25 FEB 2021 to 25 MAR 2021

EC-2, 25 FEB 2021 to 25 MAR 2021