

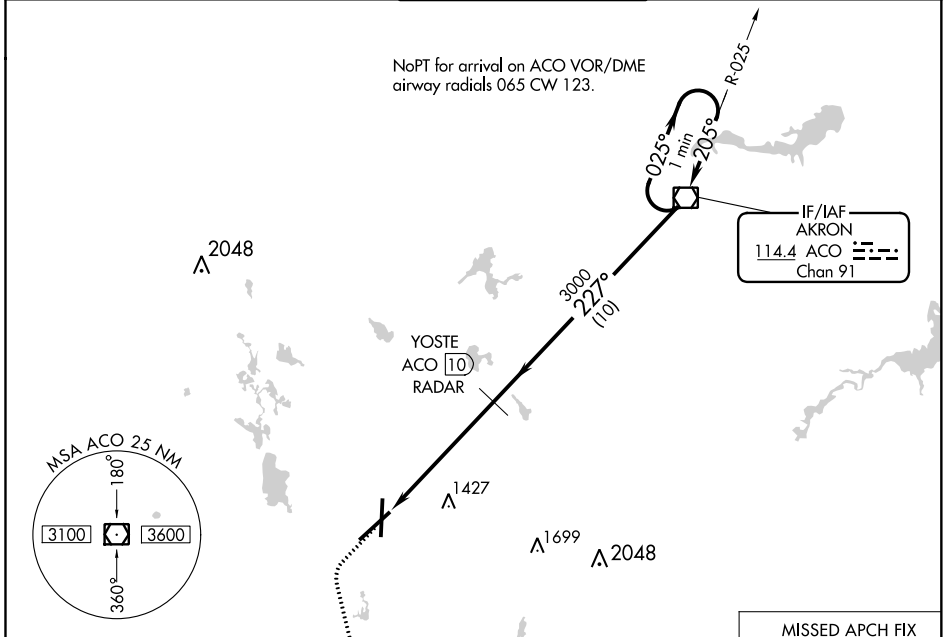
VOR/DME ACO <b>114.4</b> Chan <b>91</b>	APP CRS <b>227°</b>	Rwy Idg TDZE <b>1226</b> Apt Elev <b>1228</b>
---	------------------------	---

# VOR RWY 23

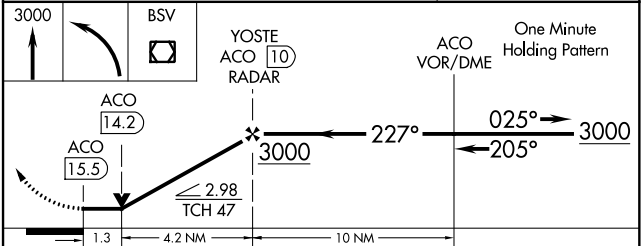
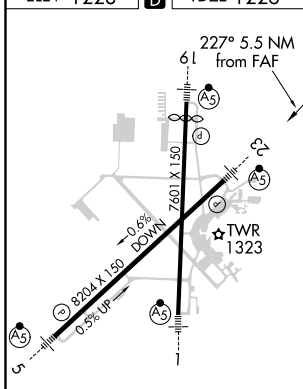
AKRON-CANTON RGNL(CAK)

<p><b>▼</b> DME or RADAR required.</p>		<p>MALSR</p>	<p>MISSED APPROACH: Climb to 3000 then left turn direct BSV VOR/DME and hold.</p>	
--	--	--------------	---	--

<p>ATIS <b>121.05</b></p>	<p>CLEVELAND APP CON * <b>125.5 269.25</b></p>	<p>AKRON-CANTON TOWER <b>134.75 279.575</b></p>	<p>GND CON <b>121.7 348.6</b></p>	<p>CLNC DEL <b>132.05</b></p>
-------------------------------	--	---	---------------------------------------	-----------------------------------



ELEV 1228	<b>D</b>	TDZE 1226
-----------	----------	-----------



HIRL Rws 1-19 and 5-23

FAF to MAP 5.5 NM

Knots	60	90	120	150	180
Min:Sec	5:30	3:40	2:45	2:12	1:50

CATEGORY	A	B	C	D
S-23	1680/24	454 (500-½)	1680/40 454 (500-¾)	1680/50 454 (500-1)
CIRCLING	1760-1	532 (600-1)	1760-1½ 532 (600-1½)	1780-2 552 (600-2)

EC-2, 25 FEB 2021 to 25 MAR 2021

EC-2, 25 FEB 2021 to 25 MAR 2021