

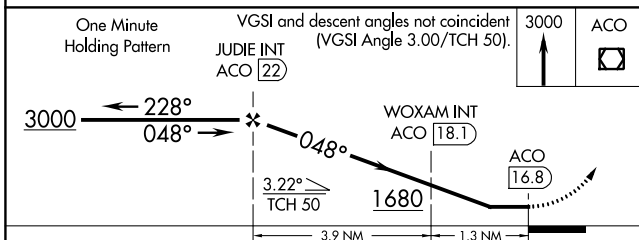
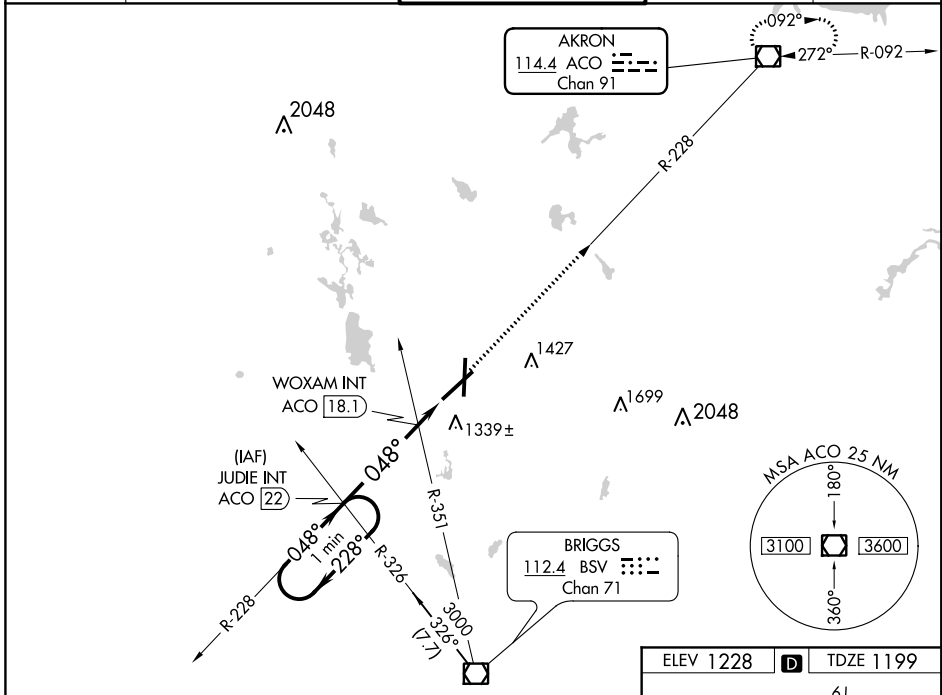
VOR/DME ACO 114.4 Chan 91	APP CRS 048°	Rwy Idg TDZE Apt Elev	8204 1199 1228
---	------------------------	-----------------------------	---

VOR RWY 5

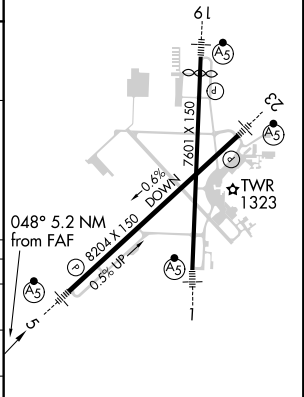
AKRON-CANTON RGNL (CAK)

	MALSRS	MISSED APPROACH: Climb to 3000 direct ACO VOR/DME and hold.
--	--------	--

ATIS 121.05	CLEVELAND APP CON * 125.5 269.25	AKRON-CANTON TOWER 134.75 279.575	GND CON 121.7 348.6	CLNC DEL 132.05
-----------------------	--	---	-------------------------------	---------------------------



ELEV 1228	D	TDZE 1199
-----------	----------	-----------



CATEGORY	A	B	C	D
S-5	1680/24	481 (500-½)	1680/40 481 (500-¾)	1680/50 481 (500-1)
CIRCLING	1760-1	532 (600-1)	1760-1½ 532 (600-1½)	1780-2 552 (600-2)
WOXAM FIX MINIMUMS				
S-5	1600/24	401 (400-½)	1600/40 401 (400-¾)	1600/50 401 (400-1)
CIRCLING	1760-1	532 (600-1)	1760-1½ 532 (600-1½)	1780-2 552 (600-2)

HIRL Rwy 1-19 and 5-23					
FAF to MAP 5.2 NM					
Knots	60	90	120	150	180
Min:Sec	5:12	3:28	2:36	2:05	1:44

EC-2, 25 FEB 2021 to 25 MAR 2021

EC-2, 25 FEB 2021 to 25 MAR 2021