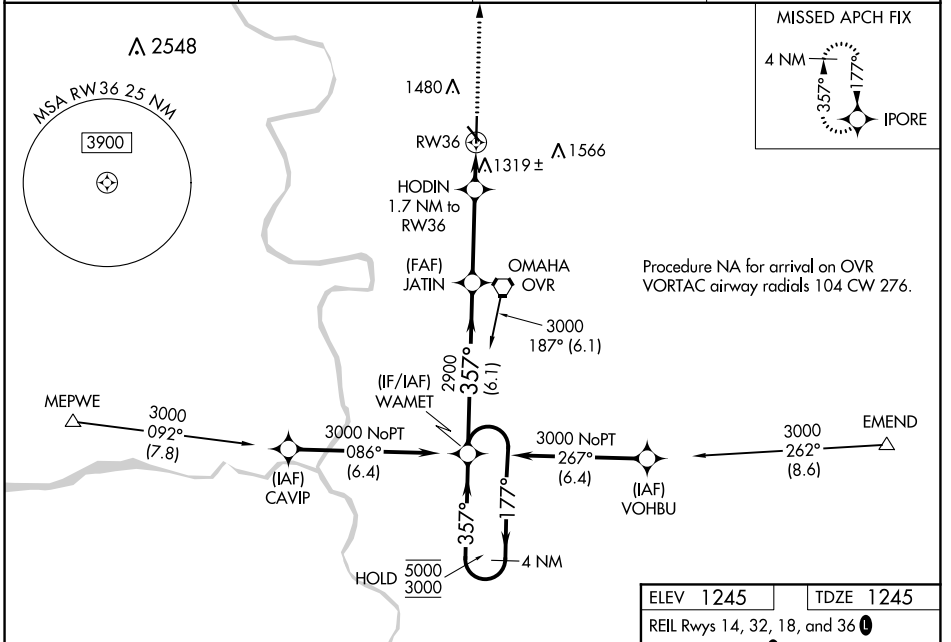


|                                 |                        |   |
|---------------------------------|------------------------|---|
| WAAS<br>CH <b>53606</b><br>W36A | APP CRS<br><b>357°</b> | Rwy Idg<br>TDZE <b>1245</b><br>Apt Elev <b>1245</b> |
|---------------------------------|------------------------|---|

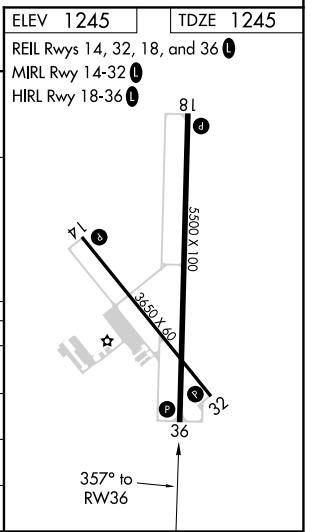
# RNAV (GPS) RWY 36

COUNCIL BLUFFS MUNI (CBF)

|  |                                     |                            |   |
|--|-------------------------------------|----------------------------|---|
| RNP APCH.  |                                     |                            | MISSED APPROACH: Climb to 3000 direct IPORE and hold. |
| <p><b>⚠</b> Baro-VNAV and VDP NA when using Eppley Airfield altimeter setting. For uncompensated Baro-VNAV systems, LNAV/VNAV NA below -17°C or above 54°C. When local altimeter setting not received, use Eppley Airfield altimeter setting and increase LPV DA to 1498 feet, LNAV/VNAV DA to 1548 feet, and all MDA 60 feet and increase LNAV/VNAV all Cats visibility 1/2 SM, LNAV Cat C and D visibility 1/2 SM, and Circling Cat C and D visibility 1/4 SM.</p> |                                     |                            |   |
| AWOS-3<br><b>126.575</b>   | OMAHA APP CON<br><b>124.5 263.0</b> | CLNC DEL<br><b>127.675</b> | UNICOM<br><b>122.8 (CTAF)</b>                         |



|                      |                       |                       |                           |                       |      |            |
|----------------------|-----------------------|-----------------------|---------------------------|-----------------------|------|------------|
| 4 NM Holding Pattern |                       | WAMET                 | JATIN                     | HODIN                 | 3000 | IPORE      |
| 5000 ← 177°          |                       | → 357°                |                           | 2900                  | ↑    | *NNAV only |
| 3000                 |                       | 357°                  |                           | 1.7 NM to RW36        | ↑    |            |
| GP 3.00°             |                       | *1820                 |                           | *0.9 NM to RW36       | ↑    |            |
| TCH 50               |                       | 6.1 NM                |                           | 0.8 NM                | ↑    |            |
|                      |                       | 3.4 NM                |                           | 0.9 NM                | ↑    |            |
| CATEGORY             | A                     | B                     | C                         | D                     |      |            |
| LPV DA               |                       | 1445-3/4              | 200 (200-3/4)             |                       |      |            |
| LNAV/VNAV DA         |                       | 1495-3/4              | 250 (300-3/4)             |                       |      |            |
| LNAV MDA             |                       | 1580-1                | 335 (400-1)               |                       |      |            |
| <b>C</b> CIRCLING    | 1780-1<br>535 (600-1) | 1840-1<br>595 (600-1) | 1840-1/2<br>595 (600-1/2) | 1880-2<br>635 (700-2) |      |            |



NC-3, 25 FEB 2021 to 25 MAR 2021

NC-3, 25 FEB 2021 to 25 MAR 2021