

COLUMBUS, MISSISSIPPI

# ILS or LOC Y RWY 31C

LOC I-TBB <b>108.7</b>	APCH CRS <b>315°</b>	31C Rwy Ldg <b>12,004</b> TDZE <b>213</b> Arprt Elev <b>218</b>	31R <b>8001</b> <b>218</b> <b>218</b>
---------------------------	-------------------------	--	--

AL-91 [USAF]

COLUMBUS AFB (KCBM)

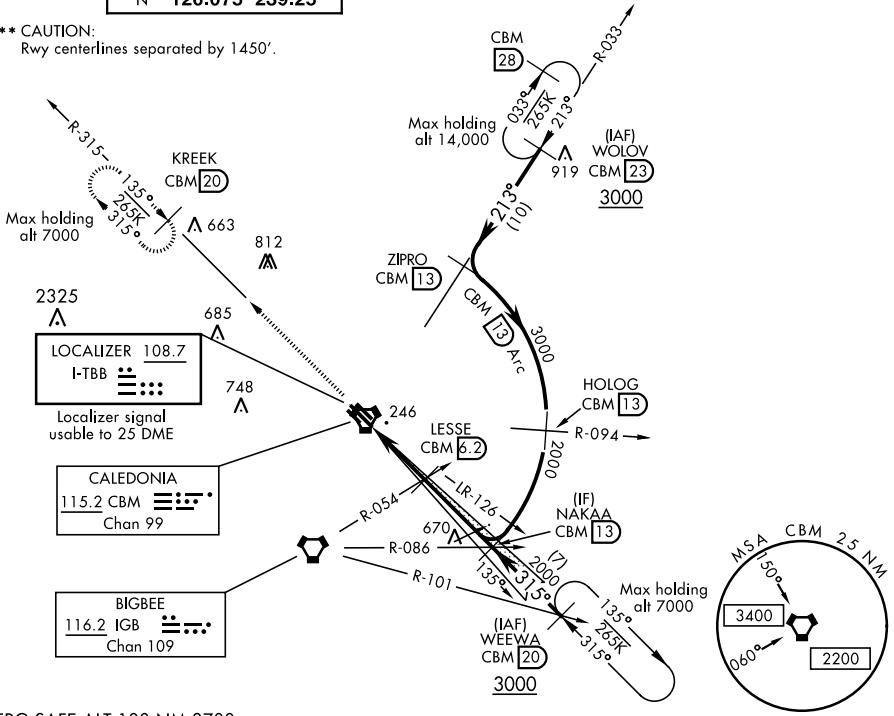
▼ \* When ALS inop, increase RVR to 40, vis to ¾ mile.  
 \*\* When ALS inop, increase RVR to 55, vis to 1 mile.
 

 ALSF-1  

 MISSED APPROACH: Climb heading 315° to intercept the VOR/TAC CBM R-315 outbound to KREEK (CBM R-315/20) and hold. Maintain 4000.

ATIS <b>115.2 273.5</b>	COLUMBUS APP CON SE <b>134.55 350.3</b> SW <b>135.6 323.275</b> N <b>126.075 239.25</b>	COLUMBUS TOWER <b>126.65 379.925</b>	GND CON <b>121.9 275.8</b>	CLNC DEL <b>269.55</b>
----------------------------	--	---	-------------------------------	---------------------------

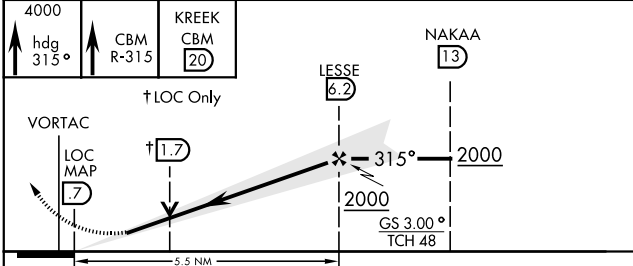
\*\*\* CAUTION:  
Rwy centerlines separated by 1450'.



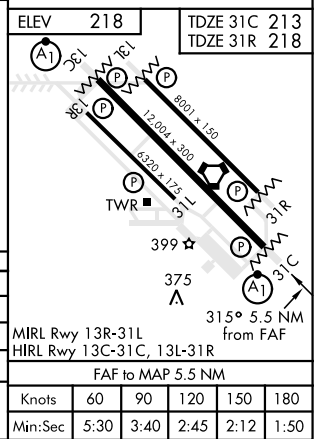
SC-4, 25 FEB 2021 to 25 MAR 2021

SC-4, 25 FEB 2021 to 25 MAR 2021

EMERG SAFE ALT 100 NM 3700



CATEGORY	A	B	C	D	E
S-ILS 31C *	413/24		200	(200-½)	
S-LOC 31C **	580/24	367	580/35		367 (400-¾)
SIDESTEP RWY 31R ***	580/55		362	(400-1)	
CIRCLING	740-1	522 (600-1)	760-1½ 542 (600-1½)	780-2 562 (600-2)	1220-3 1002 (1100-3)



COLUMBUS, MISSISSIPPI  
Amdt 1 13AUG20

33°39'N-88°27'W

COLUMBUS AFB (KCBM)

# ILS or LOC Y RWY 31C