

WAAS CH <b>97432</b> <b>W36A</b>	APP CRS <b>356°</b>	Rwy Idg TDZE <b>1954</b> Apt Elev <b>1954</b>	<b>5949</b>
--	------------------------	---	-------------

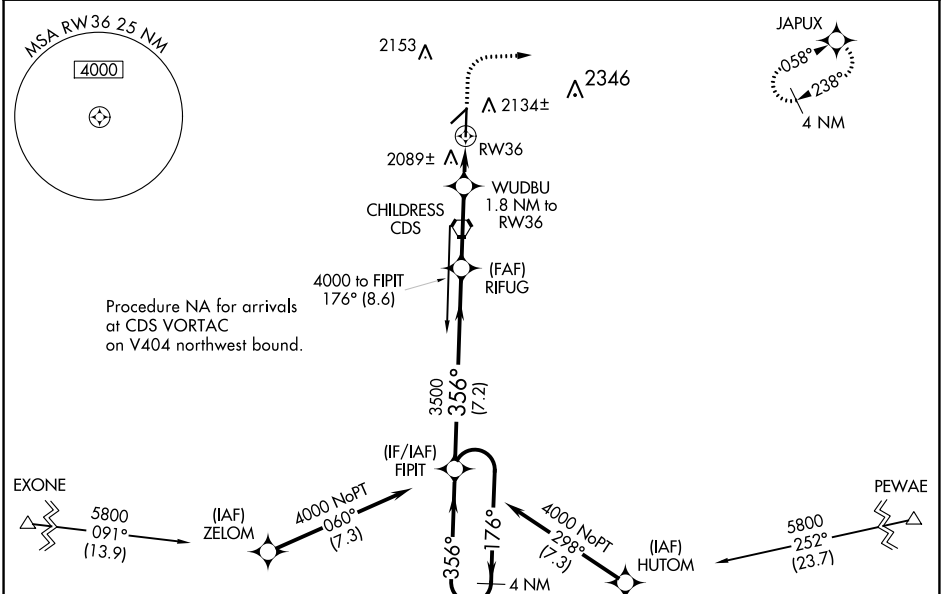
# RNAV (GPS) RWY 36

CHILDRESS MUNI (CDS)

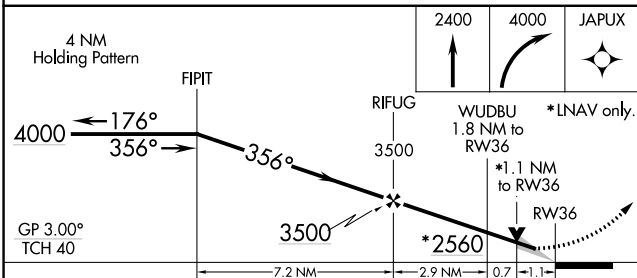
**⚠** Circling to Rwy 4, 18, 22 NA at night. For uncompensated Baro-VNAV systems, LNAV/VNAV NA below -10°C (14°F) or above 54°C (130°F). DME/DME RNP-0.3 NA. When local altimeter setting not received, use Altus/Quartz Mountain Rgnl altimeter setting and increase all DA 188 feet, all MDA 200 feet and increase LPV all Cats visibility 3/8 mile, LNAV/VNAV all Cats visibility 3/4 mile, LNAV Cats C and D visibility 3/8 mile, Circling Cat C visibility 3/4 mile, and Circling Cat D visibility 1/2 mile. Baro-VNAV and VDP NA with Altus/Quartz Mountain Rgnl altimeter setting.

**MISSED APPROACH:**  
Climb to 2400 then climbing right turn to 4000 direct JAPUX and hold.

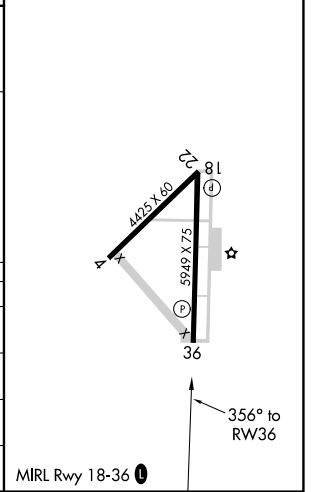
ASOS <b>135.125</b>	FORT WORTH CENTER <b>133.5 350.35</b>	UNICOM <b>122.8 (CTAF) 0</b>
------------------------	--	---------------------------------



ELEV 1954	TDZE 1954
-----------	-----------



CATEGORY	A	B	C	D
LPV DA		2154-3/4	200 (200-3/4)	
LNAV/VNAV DA		2376-1 1/2	422 (500-1 1/2)	
LNAV MDA	2340-1 386 (400-1)		2340-1 1/8 386 (400-1 1/8)	
CIRCLING	2500-1 546 (600-1)		2500-1 1/2 546 (600-1 1/2)	2520-2 566 (600-2)



SC-2, 25 FEB 2021 to 25 MAR 2021

SC-2, 25 FEB 2021 to 25 MAR 2021