

VORTAC CEC	APP CRS	Rwy Idg	5000
109.0	346°	TDZE	59
Chan 27		Apt Elev	61

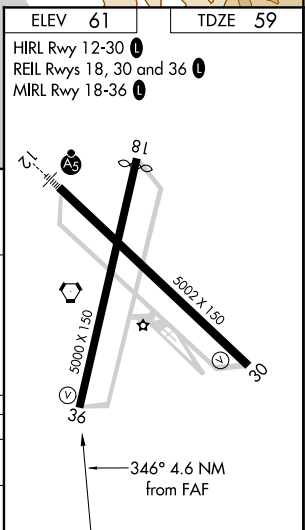
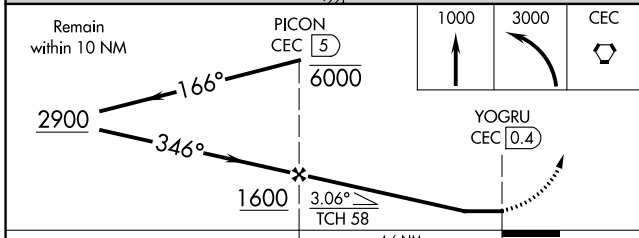
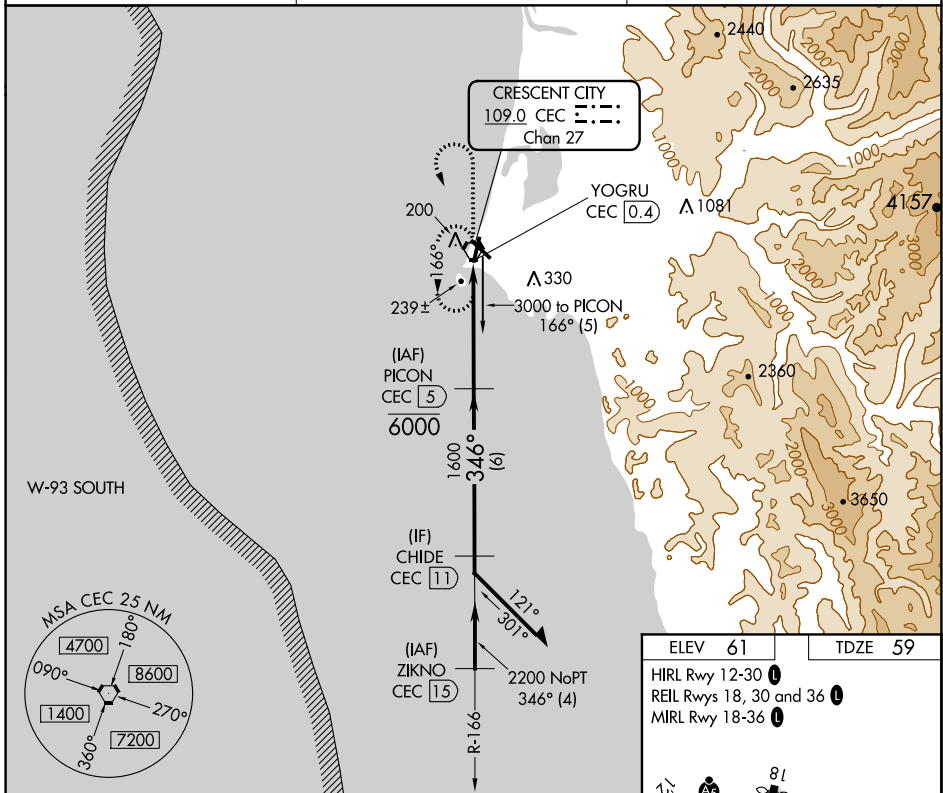
VOR/DME RWY 36

JACK MC NAMARA FIELD (CEC)

⚠ When local altimeter setting not received, use Brookings altimeter setting and increase all MDA 100 feet; increase S-36 Cat C/D and Circling Cat D visibilities ½ mile and Circling Cat C visibility ½ mile. Helicopter visibility reduction below 1 SM NA. Night landing: Rwy 36 operational VGSI required, remain on or above VGSI glidepath until threshold. Night landing: Rwy 18, 30 NA.

MISSED APPROACH: Climb to 1000 then climbing left turn to 3000 direct CEC VORTAC and hold, continue climb-in-hold to 3000.

ASOS 119.925	SEATTLE CENTER 124.85 306.3	UNICOM 122.8 (CTAF) 0
------------------------	---------------------------------------	---------------------------------



CATEGORY	A	B	C	D
S-36	500-1	441 (500-1)	500-1 ³ / ₈	441 (500-1 ³ / ₈)
C CIRCLING	540-1	479 (500-1)	640-1 ¹ / ₂ 579 (600-1 ¹ / ₂)	640-2 579 (600-2)

SW-2, 25 FEB 2021 to 25 MAR 2021

SW-2, 25 FEB 2021 to 25 MAR 2021