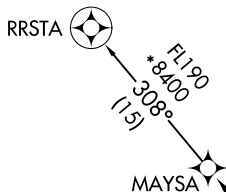


(MAYSA7.MAYSA) 20142

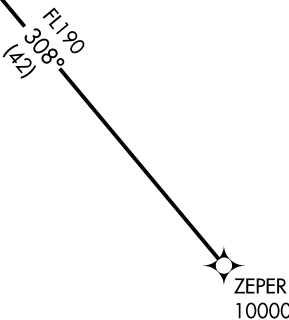
MAYSA SEVEN DEPARTURE (RNAV) AL-6494 (FAA)

CHANDLER MUNI (CHD)
CHANDLER, ARIZONA



**TOP ALTITUDE:
ASSIGNED BY ATC**

ATIS 128.325
 GND CON 124.4
 CHANDLER TOWER * 124.4
 126.1 (Rwy 4L-22R)
 133.1 (Rwy 4R-22L)
 PHOENIX DEP CON 123.7 363.0



TAKEOFF MINIMUMS

Rwys 4L/R, 22L/R: Standard.

NOTE: RNAV 1.

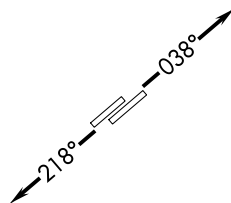
NOTE: Turbojets and turboprops only.

NOTE: RADAR required.

NOTE: GPS required.

NOTE: Aircraft departing KGEU and KGYR ATC assigned only.

Do not file.



NOTE: Chart not to scale.



DEPARTURE ROUTE DESCRIPTION

TAKEOFF RUNWAYS 4L/R: Climb on heading 038° or as assigned by ATC. Thence. . .

TAKEOFF RUNWAYS 22L/R: Climb on heading 218° or as assigned by ATC. Thence. . .

. . . expect RADAR vectors to cross ZEPER at or above 10000, then on track 308° to MAYSA, then on RRSTA TRANSITION. Maintain ATC assigned altitude, expect filed altitude 3 minutes after departure.

RRSTA TRANSITION (MAYSA7.RRSTA)

MAYSA SEVEN DEPARTURE (RNAV)

(MAYSA7.MAYSA) 21MAY20

CHANDLER, ARIZONA
CHANDLER MUNI (CHD)

SW-4, 25 FEB 2021 to 25 MAR 2021

SW-4, 25 FEB 2021 to 25 MAR 2021