


| | | |
|--|------------------------|--|
| LOC/DME I-CHO 111.7 Chan 54 | APP CRS 030° | Rwy Idg TDZE Apt Elev 6801 640 640 |
|--|------------------------|--|

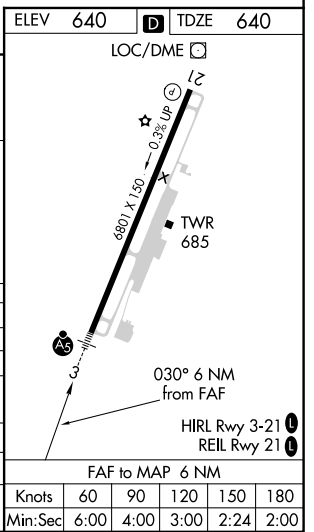
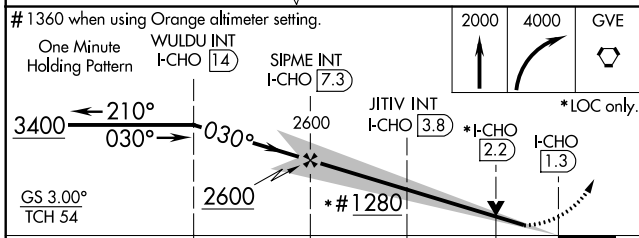
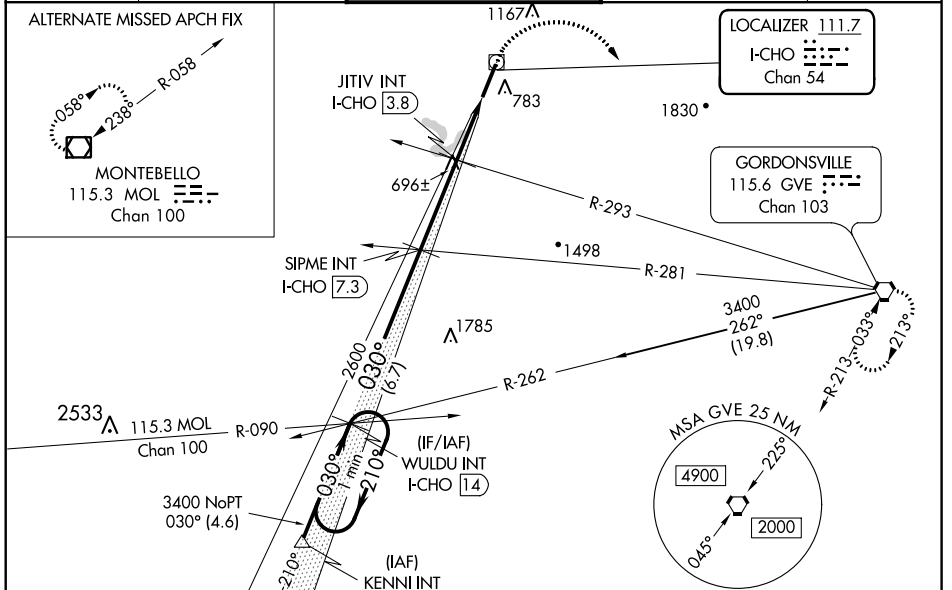
ILS or LOC RWY 3


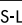
CHARLOTTESVILLE-ALBEMARLE (CHO)

▼ When local altimeter setting not received, use Orange altimeter setting and increase S-ILS 3 DA to 912 and all MDA 80 feet; increase S-LOC 3 Cats C/D, Circling Cats C/D, JITIV fix minimums S-LOC 3 Cats C/D, and JITIV fix minimums Circling Cats C/D visibility ¼ mile. VDP NA when using Orange altimeter setting. For inop ALS when using Orange altimeter setting increase S-ILS 3 all Cats visibility to ¾, S-LOC 3 Cats C, D visibility to 2 miles, and S-LOC 3 JITIV fix minimums Cat C, D visibility to 1½ mile.

MALS  **MISSED APPROACH:** Climb to 2000 then climbing right turn to 4000 direct GVE VORTAC and hold.

| | | | | |
|------------------------|--|--|---------------------------------|-------------------------|
| ATIS 118.425 | POTOMAC APP CON 132.85 323.125 | CHARLOTTESVILLE TOWER ★ 124.5 (CTAF) 338.275 | GND CON 121.9 338.275 | UNICOM 122.95 |
|------------------------|--|--|---------------------------------|-------------------------|



| CATEGORY | A | B | C | D |
|--|-------------------|-------------|---------|--------------|
| S-ILS 3 | 840-½ 200 (200-½) | | | |
| S-LOC 3 | 1280-½ | 640 (700-½) | 1280-1⅓ | 640 (700-1⅓) |
|  CIRCLING | 1280-1 | 640 (700-1) | 1500-2½ | 1500-2¾ |
| JITIV FIX MINIMUMS (DUAL VOR RECEIVERS OR DME REQUIRED) | | | | |
| S-LOC 3 | 980-½ | 340 (400-½) | 980-⅝ | 340 (400-⅝) |
|  CIRCLING | 1100-1 | 460 (500-1) | 1500-2½ | 1500-2¾ |

NE-3, 25 FEB 2021 to 25 MAR 2021

NE-3, 25 FEB 2021 to 25 MAR 2021