

APP CRS	Rwy Idg	3196
182°	TDZE	313
	Apt Elev	313

RNAV (GPS) RWY 18

MISSISSIPPI COUNTY (CHQ)

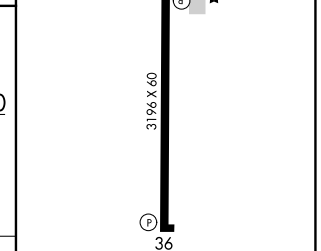
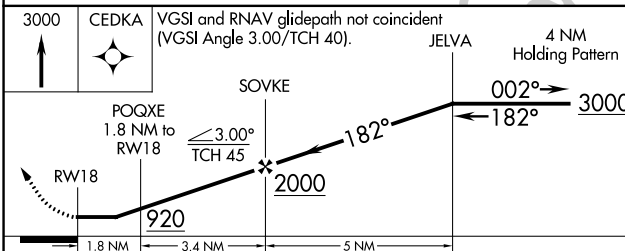
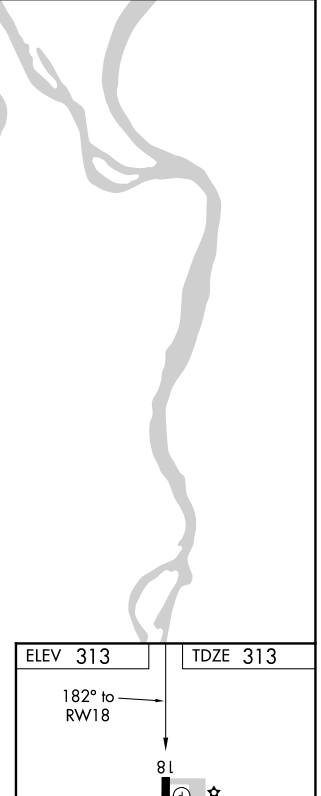
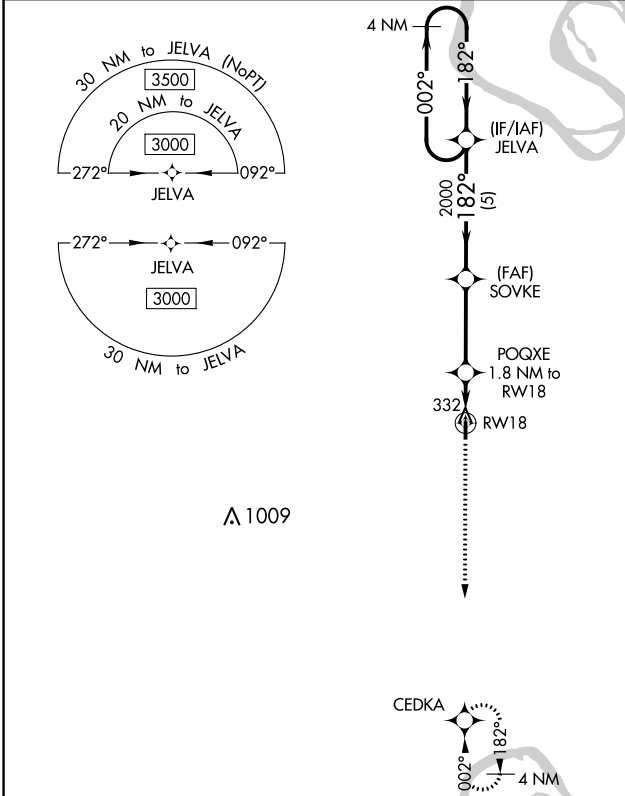
NA DME/DME RNP -0.3 NA. Procedure NA at night. Use Sikeston altimeter setting, if not received use Cairo altimeter setting and increase all MDA 20 feet. Helicopter visibility reduction below 1 SM NA.

MISSED APPROACH: Climb to 3000 direct CEDKA and hold.

SIK AWOS-3
119.175

MEMPHIS CENTER
133.65 292.15

CTAF
122.9



CATEGORY	A	B	C	D
LNVA MDA	800-1	487 (500-1)		NA
C CIRCLING	800-1 487 (500-1)	860-1 547 (600-1)		NA

MIRL Rwy 18-36 **1**
REIL Rwy 18 and 36 **1**

NC-3, 25 FEB 2021 to 25 MAR 2021

NC-3, 25 FEB 2021 to 25 MAR 2021