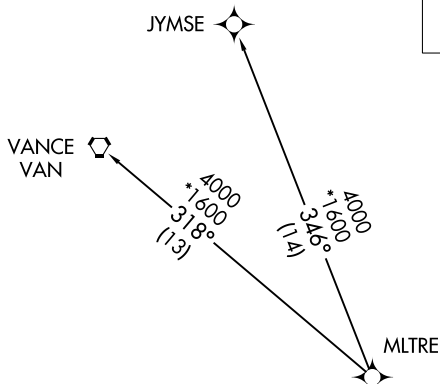


# MLTRE TWO DEPARTURE (RNAV)

**TOP ALTITUDE:  
4000**

ATIS  
124.75  
CLNC DEL  
127.325 291.65  
CPDLC  
GND CON  
121.9 348.6  
CHARLESTON TOWER  
126.0 239.0  
CHARLESTON DEP CON  
119.3 379.925



- NOTE: Transponder code will be issued by Charleston clearance delivery.
- NOTE: If unable to accept climb rate, advise ATC on initial contact.
- NOTE: DME/DME/IRU or GPS Required.
- NOTE: RNAV 1.
- NOTE: Radar Required for non-GPS equipped aircraft.
- NOTE: For non-GPS equipped aircraft: CHS and VAN DMEs must be operational for Takeoff Rwy 15, 21; FLO DME must be operational for Takeoff Rwy 3, 33.

**TAKEOFF MINIMUMS:**  
 Rwy 15, 33: Standard.  
 Rwy 3, 21: Standard with minimum climb of 500' per NM to 560.

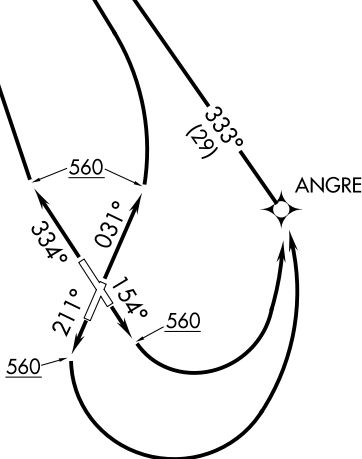
NOTE: Chart not to scale.

## DEPARTURE ROUTE DESCRIPTION

- TAKEOFF RWY 3:** Climb heading 031° to 560 MSL, then left turn direct MLTRE, thence. . .
- TAKEOFF RWY 15:** Climb heading 154° to 560 MSL, then left turn direct ANGRE, then on depicted route to MLTRE, thence. . .
- TAKEOFF RWY 21:** Climb heading 211° to 560 MSL, then left turn direct ANGRE, then on depicted route to MLTRE, thence. . .
- TAKEOFF RWY 33:** Climb heading 334° to 560 MSL, direct MLTRE, thence. . .

. . . via assigned transition. Maintain 4000. Expect clearance to filed altitude 10 minutes after departure.

JYMSE TRANSITION (MLTRE2.JYMSE):  
VANCE TRANSITION (MLTRE2.VAN):



SE-2, 25 FEB 2021 to 25 MAR 2021

SE-2, 25 FEB 2021 to 25 MAR 2021