

PLFMD TWO DEPARTURE (RNAV)

SE-2, 25 FEB 2021 to 25 MAR 2021

TOP ALTITUDE:
4000

ATIS 124.75
CLNC DEL 127.325 291.65
CPDLC
GND CON 121.9 348.6
CHARLESTON TOWER 126.0 239.0
CHARLESTON DEP CON 120.7 306.925

NOTE: Transponder code will be issued by Charleston clearance delivery.
NOTE: If unable to accept climb rate, advise ATC on initial contact.
NOTE: DME/DME/IRU or GPS Required.
NOTE: RNAV 1.

NOTE: Radar Required for non-GPS equipped aircraft.
NOTE: For non-GPS equipped aircraft: CHS and VAN DMEs must be operational for Takeoff Rwy 15; CAE, IRG, and SAV DMEs must be operational for DUBLIN Transition. CAE DME must be operational for COLLIERS Transition.

COLLIERS
IRG

4000
*3000
3008°
(53)

FIBRO

4000
*1500
283°
(20)

ALLENDALE
ALD

6000
*7400
763°
(1011)

DUBLIN
DBN



DEPARTURE ROUTE DESCRIPTION

TAKEOFF RWY 3: Climb heading 031° to 560 MSL, then left turn direct BRYSE, then on depicted route to PLFMD, thence. . . .

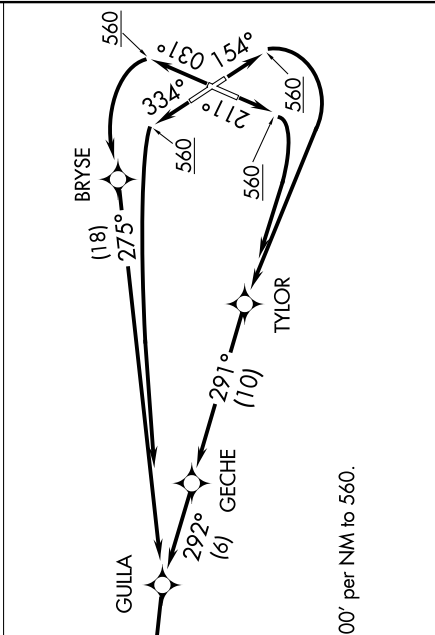
TAKEOFF RWY 15: Climb heading 154° to 560 MSL, then right turn direct TYLOR, then on depicted route to PLFMD, thence. . . .

TAKEOFF RWY 21: Climb heading 211° to 560 MSL, then right turn direct TYLOR, then on depicted route to PLFMD, thence. . . .

TAKEOFF RWY 33: Climb heading 334° to 560 MSL, then left turn direct GULLA, then on depicted route to PLFMD, thence. . . .

. . . . on assigned transition, maintain 4000. Expect clearance to filed altitude/flight level within ten (10) minutes after departure.

ALLENDALE TRANSITION (PLFMD2.ALD):
COLLIERS TRANSITION (PLFMD2.IRG):
DUBLIN TRANSITION (PLFMD2.DBN):



TAKEOFF MINIMUMS:
Rwys 15, 33: Standard.
Rwys 3, 21: Standard with minimum climb of 500' per NM to 560.

NOTE: Chart not to scale.