

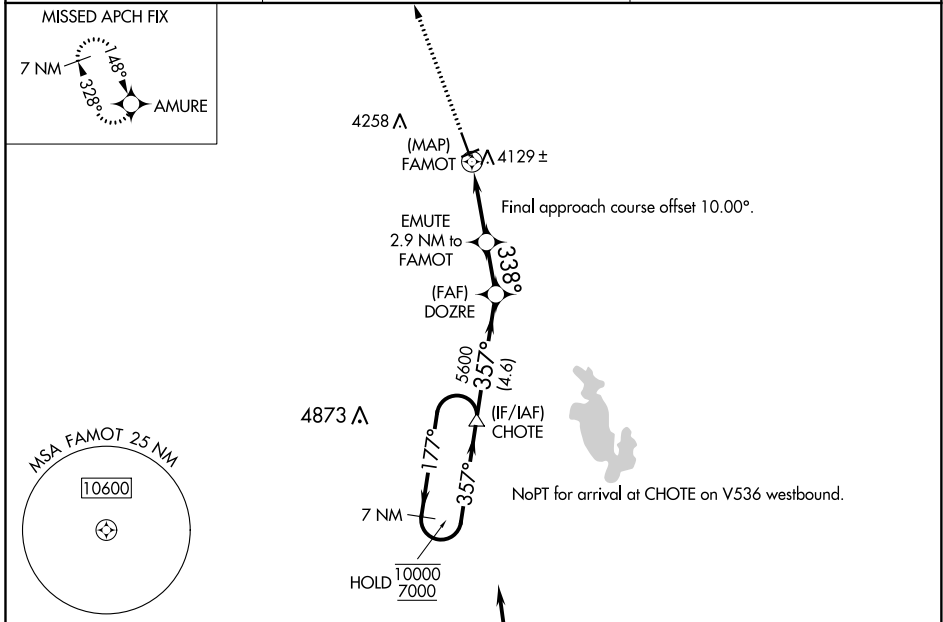
APP CRS 338°	Rwy ldg 5001
	TDZE 3943
	Apt Elev 3947

RNAV (GPS) RWY 33

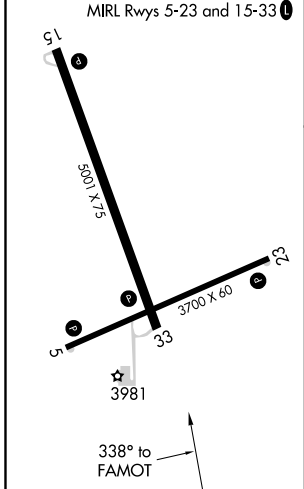
CHOTEAU (CII)

RNP APCH.	MISSED APPROACH: Climb to 6600 direct to AMURE and hold.
NA Rwy 33 helicopter visibility reduction below 3/4 SM NA.	

AWOS-2 119.275	SALT LAKE CITY CENTER 133.4 285.4	UNICOM 122.8 (CTAF) 0
--------------------------	---	---------------------------------



ELEV 3947	TDZE 3943
-----------	-----------



6600 AMURE	VGSI and descent angles not coincident (VGSI Angle 3.00/TCH 25).			
EMUTE 2.9 NM to FAMOT	DOZRE			
1.1 NM to FAMOT	CHOTE 7 NM Holding Pattern			
FAMOT	CHOTE			
338°	357°			
5000	5600			
3.00° TCH 45	177°			
10000	7000			
0.2	1.1 NM	1.8 NM	1.9 NM	4.6 NM

CATEGORY	A	B	C	D
INAV MDA	4380-1	437 (500-1)	4380-1 1/4	437 (500-1 1/4)
CIRCLING	4440-1	493 (500-1)	4600-1 3/4 653 (700-1 3/4)	4900-3 953 (1000-3)

NW-1, 25 FEB 2021 to 25 MAR 2021

NW-1, 25 FEB 2021 to 25 MAR 2021