

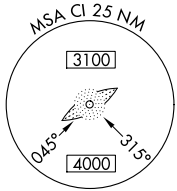
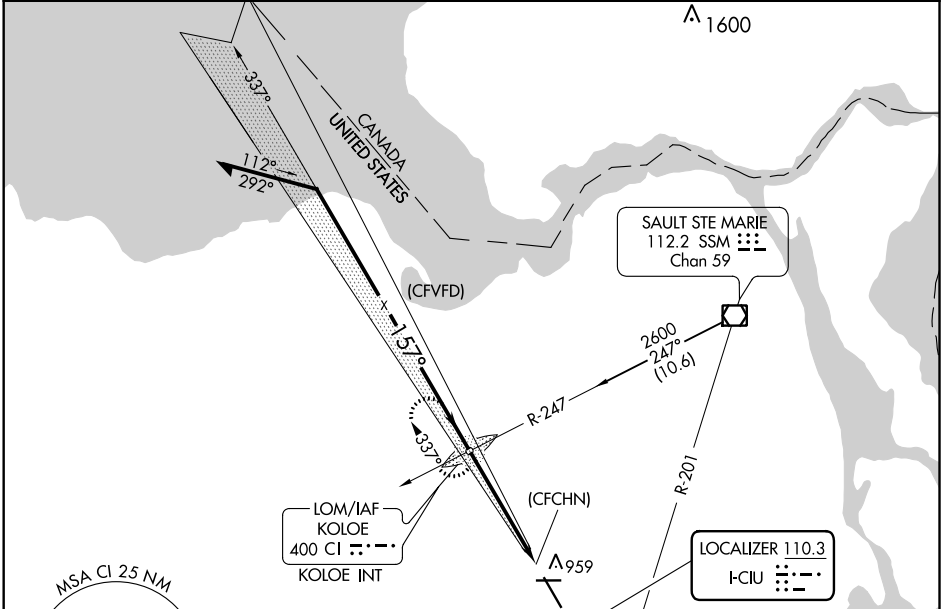
LOC I-CIU 110.3	APP CRS 157°	Rwy Idg 7203
		TDZE 799
		Apt Elev 799

ILS or LOC RWY 16

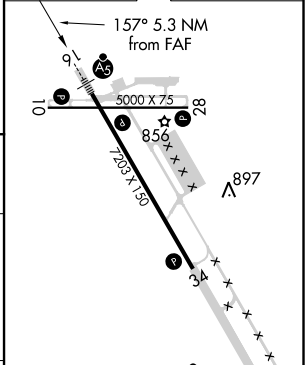
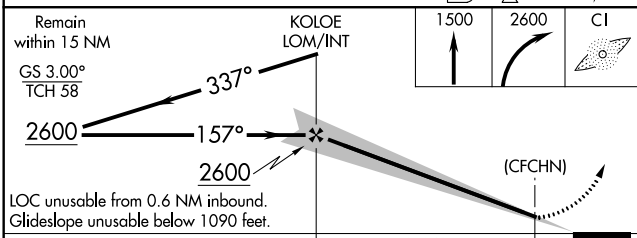
CHIPPEWA COUNTY INTL (CIU)

ADF required.	MALSR A5	MISSED APPROACH: Climb to 1500 then climbing right turn to 2600 direct KOLOE LOM/INT and hold. (TACAN aircraft climb to 5000 on heading 160° and SSM VOR/DME R-201 to PINES/SSM 24 DME and hold south, right turn, 021° inbound.)
Autopilot coupled approach NA below 1380.		

AWOS-3PT 127.575	TORONTO CENTER 132.65 344.5	UNICOM 123.0 (CTAF)
----------------------------	---------------------------------------	-------------------------------



ELEV 799	TDZE 799
----------	----------



CATEGORY	A	B	C	D	E
S-ILS 16	1090-1/2 291 (300-1/2)				
S-LOC 16	1160-1/2	361 (400-1/2)	1160-5/8	361 (400-5/8)	
CI RCLING	1260-1	461 (500-1)	1260-1 1/2	1360-2	1380-2
			461 (500-1 1/2)	561 (600-2)	581 (600-2)

REIL Rwy 10, 28 and 34	
MIRL Rwy 10-28	
HIRL Rwy 16-34	
FAF to MAP 4.7 NM	
Knots	60 90 120 150 180
Min:Sec	4:42 3:08 2:21 1:53 1:34

EC-1, 25 FEB 2021 to 25 MAR 2021

EC-1, 25 FEB 2021 to 25 MAR 2021