

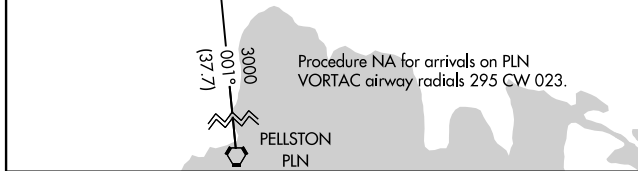
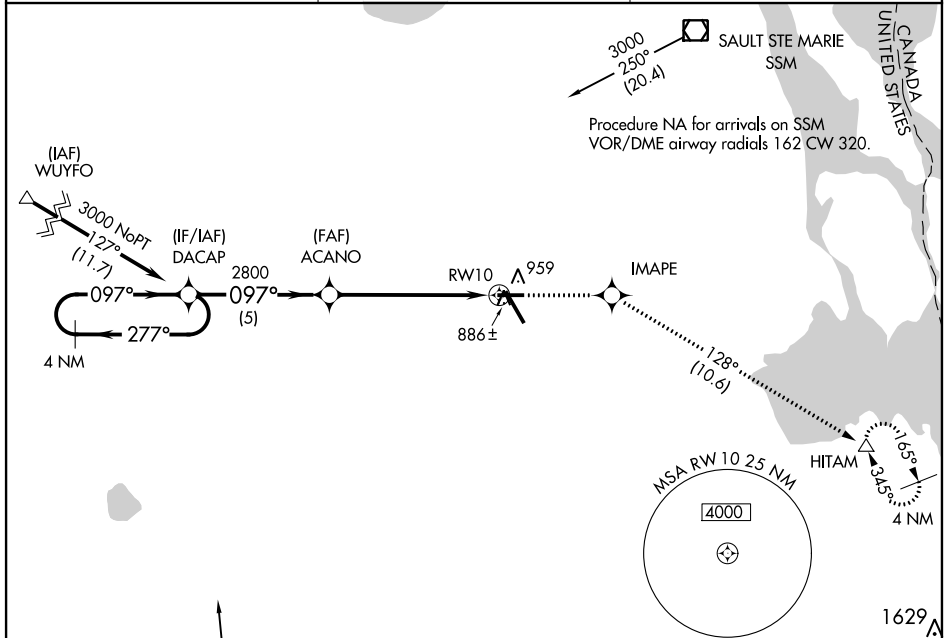
APP CRS	Rwy Idg	5000
097°	TDZE	799
	Apt Elev	799

RNAV (GPS) RWY 10

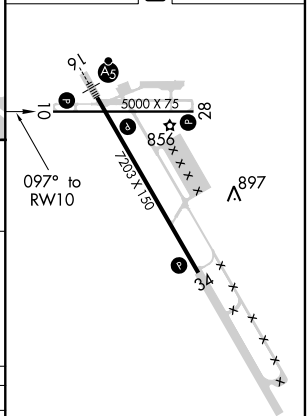
CHIPPEWA COUNTY INTL (CIU)

RNP APCH.	MISSED APPROACH: Climb to 2900 direct IMAPE and track 128° to HITAM and hold.
<p>▼ VDP NA with Sault Ste Marie altimeter setting. When local altimeter setting not received, use Sault Ste Marie Muni/Sanderson Field altimeter setting; increase all MDA 60 feet, increase LNAV visibility Cat C/D and Circling Cat C ¼ SM.</p>	

AWOS-3PT 127.575	TORONTO CENTER 132.65 344.5	UNICOM 123.0 (CTAF) 0
----------------------------	---------------------------------------	---------------------------------



ELEV 799	D TDZE 799
----------	-------------------



4 NM Holding Pattern	DACAP	2900	IMAPE	HITAM
			tr 128°	△
3000	← 277°	097° →	ACANO	2800
			1.5 NM to RW10	RW10
			3.05° TCH 40	
			5 NM	4.5 NM

CATEGORY	A	B	C	D
LNAV MDA	1320-1	521 (600-1)	1320-1½	521 (600-1½)
C CIRCLING	1320-1	521 (600-1)	1320-1½	1360 - 2 561 (600-2)

REIL Rwy 10, 28 and 34 **0**

MIRL Rwy 10-28 **0**

HIRL Rwy 16-34 **0**

EC-1, 25 FEB 2021 to 25 MAR 2021

EC-1, 25 FEB 2021 to 25 MAR 2021