

RNAV (GPS) RWY 28

CHIPPEWA COUNTY INTL (CIU)

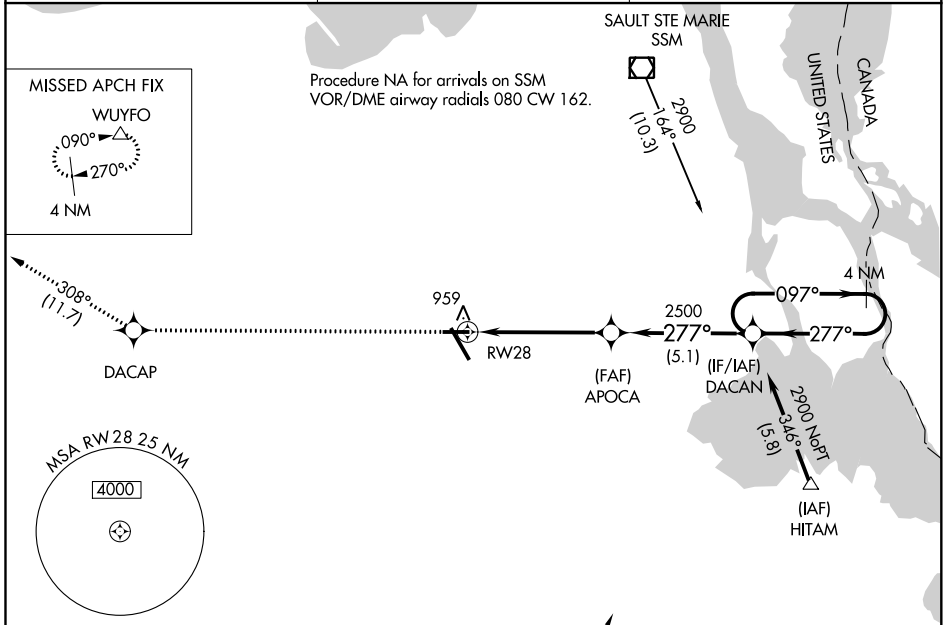
APP CRS 277°	Rwy Idg TDZE Apt Elev	5000 799 799
------------------------	-----------------------------	---

RNP APCH.

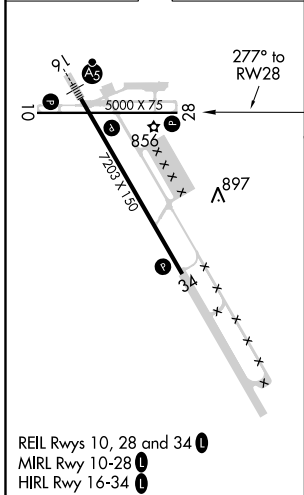
⚠ Rwy 28 helicopter visibility reduction below 1 SM NA. When local altimeter setting not received, use Sault Ste Marie Muni/Sanderson Field altimeter setting; increase all MDA 60 feet, increase LNAV and Circling visibility Cat C/D ¼ SM. Straight-in and Circling Rwy 28 NA at night.

MISSED APPROACH: Climb to 3000 direct DACAP and track 308° to WUYFO and hold.

AWOS-3PT 127.575	TORONTO CENTER 132.65 344.5	UNICOM 123.0 (CTAF)
----------------------------	---------------------------------------	-------------------------------



ELEV 799	D TDZE 799
----------	-------------------



3000 DACAP	ir 308° WUYFO	DACAN 4 NM Holding Pattern
APOCA 2500		097° 277° 2900
RW28 3.05° TCH 40		5.1 NM 5.1 NM

CATEGORY	A	B	C	D
LNAV MDA	1220-1	421 (500-1)	1220-1½	421 (500-1½)
C CIRCLING	1260-1	461 (500-1)	1260-1½	1360-2
			461 (500-1½)	561 (600-2)

EC-1, 25 FEB 2021 to 25 MAR 2021

EC-1, 25 FEB 2021 to 25 MAR 2021