

WAAS CH <b>72619</b> <b>W18A</b>	APP CRS <b>183°</b>	Rwy Idg TDZE Apt Elev	<b>5404</b> <b>173</b> <b>173</b>
--	------------------------	-----------------------------	---

# RNAV (GPS) RWY 18

FLETCHER FIELD (CKM)

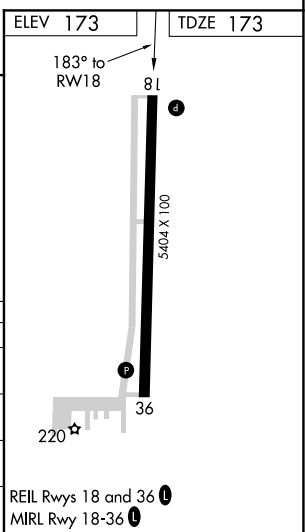
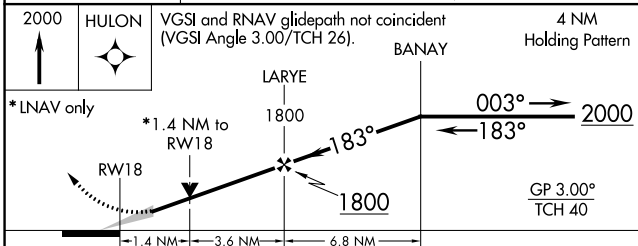
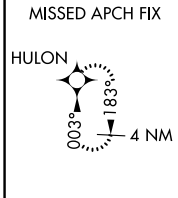
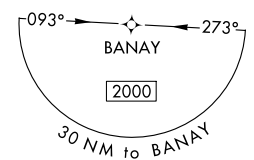
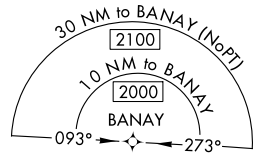
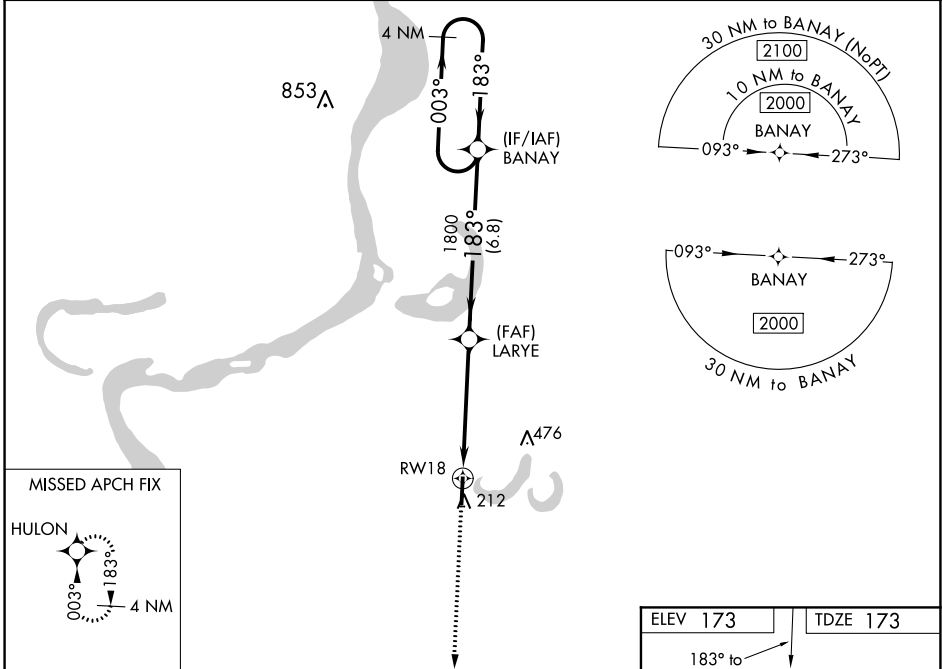
**⚠** For uncompensated Baro-VNAV systems, LNAV/VNAV NA below -15°C (5°F) or above 54°C (130°F). Baro-VNAV and VDP NA when using Tunica altimeter setting. DME/DME RNP-0.3 NA. When local altimeter setting not received, use Tunica altimeter setting: increase LPV DA to 483 feet, LNAV/VNAV DA to 647 feet and all MDA 60 feet; increase LPV all Cats visibility 1/8 SM, LNAV/VNAV all Cats visibility 1/4 SM, and LNAV Cat C/D visibility 1/8 SM. Circling Rwy 36 NA at night.

**MISSED APPROACH:**  
Climb to 2000 direct HULON and hold.

AWOS-3  
**120.675**

MEMPHIS CENTER  
**135.3 335.8**

UNICOM  
**122.8 (CTAF) 0**



CATEGORY	A	B	C	D
LPV DA	423-7/8		250 (300-7/8)	
LNAV/VNAV DA	587-13/8		414 (500-13/8)	
LNAV MDA	640-1	467 (500-1)	640-13/8	467 (500-13/8)
<b>C</b> CIRCLING	740-1	567 (600-1)	780-13/4 607 (700-13/4)	780-2 607 (700-2)

REIL Rwy 18 and 36 **0**  
MIRL Rwy 18-36 **0**

SC-4, 25 FEB 2021 to 25 MAR 2021

SC-4, 25 FEB 2021 to 25 MAR 2021