

APP CRS	Rwy Idg	4001
178°	TDZE	1214
	Apt Elev	1226

RNAV (GPS) RWY 18

CHEROKEE COUNTY RGNL (CKP)

RNP APCH.

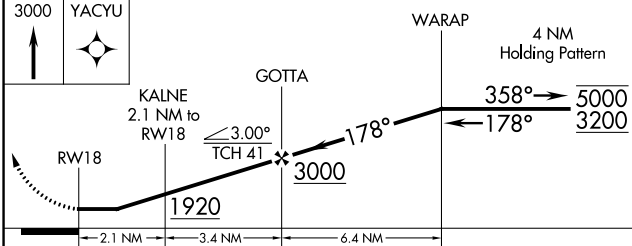
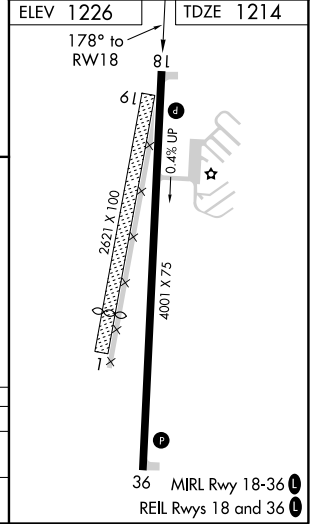
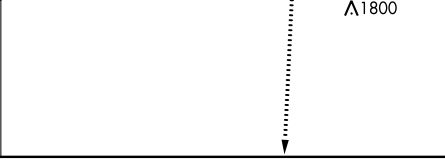
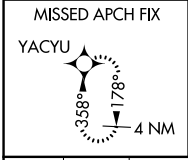
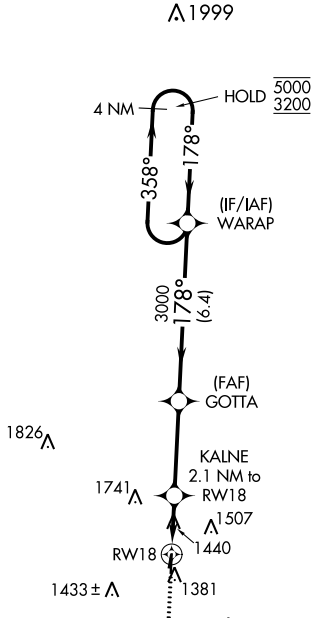
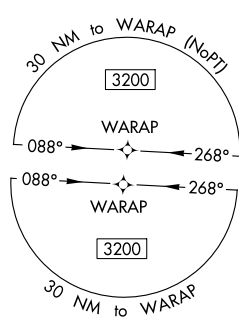
▼ Circling NA to Rwys 1 and 19. Rwy 18 helicopter visibility reduction below 1 SM NA. Rwy 18 Straight-in and Circling NA at night.

MISSED APPROACH: Climb to 3000 direct YACYU and hold.

AWOS-3
119.225

MINNEAPOLIS CENTER
125.025 235.625

UNICOM
122.8 (CTAF) 0



CATEGORY	A	B	C	D
LNVA MDA	1740-1	526 (600-1)	1740-1½	526 (600-1½)
C CIRCLING	1760-1 534 (600-1)	1820-1 594 (600-1)	2100-2½ 874 (900-2½)	2160-3 934 (1000-3)

NC-3, 25 FEB 2021 to 25 MAR 2021

NC-3, 25 FEB 2021 to 25 MAR 2021