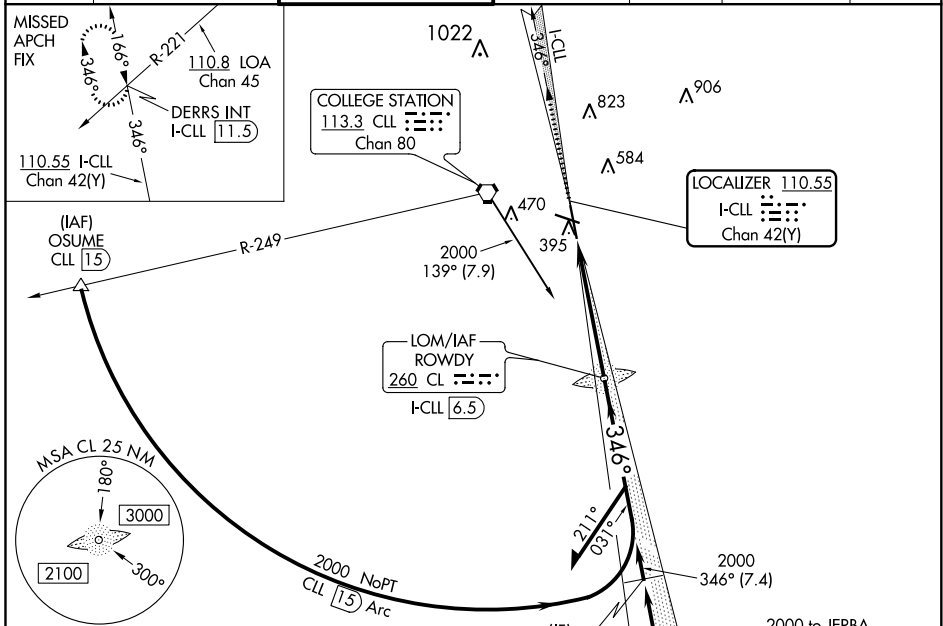


LOC/DME I-CLL 110.55 Chan 42(Y)	APP CRS 346°	Rwy Idg TDZE Apt Elev 7000 311 321
--	------------------------	--

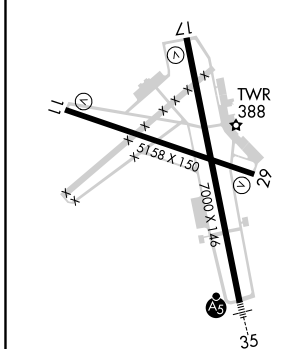
ILS or LOC RWY 35

EASTERWOOD FIELD (CLL)

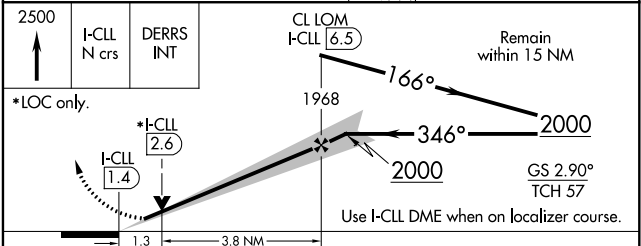
ADF or DME required for procedure entry. ADF or DME required for LOC only.		MALSR 	MISSED APPROACH: Climb to 2500 on I-CLL north course to DERRS INT/I-CLL 11.5 DME and hold.					
<p>▼ For inop ALS, increase S-ILS 35 Cat E visibility to 3/4 SM and S-LOC 35 Cat E visibility to 1 1/8 SM. ILS glideslope unusable for coupled approaches below 1050 feet MSL.</p> <p>▲</p>		ATIS 126.85	HOUSTON APP CON 134.3 360.85	EASTERWOOD TOWER ★ 118.5 (CTAF) 284.7	GND CON 128.7 284.7	CLNC DEL 128.7	CLNC DEL 120.4 (when twr closed)	UNICOM 122.95



ELEV 321	D	TDZE 311
----------	----------	----------



Procedure NA for arrival at COUTH on V306 eastbound.



CATEGORY	A	B	C	D	E
S-ILS 35		511-1/2	200 (200-1/2)		
S-LOC 35	760-1/2	449 (500-1/2)		760-7/8	449 (500-7/8)
C CIRCLING	860-1 539 (600-1)	880-1 559 (600-1)	1000-2 679 (700-2)	1180-2 3/4 859 (900-2 3/4)	1180-3 859 (900-3)

SC-5, 25 FEB 2021 to 25 MAR 2021

SC-5, 25 FEB 2021 to 25 MAR 2021