

LOC/DME I-CLL <b>110.55</b> Chan 42(Y)	APP CRS <b>166°</b>	Rwy Idg TDZE Apt Elev	<b>7000</b> <b>321</b> <b>321</b>
----------------------------------------------	------------------------	-----------------------------	-----------------------------------------

# LOC BC RWY 17

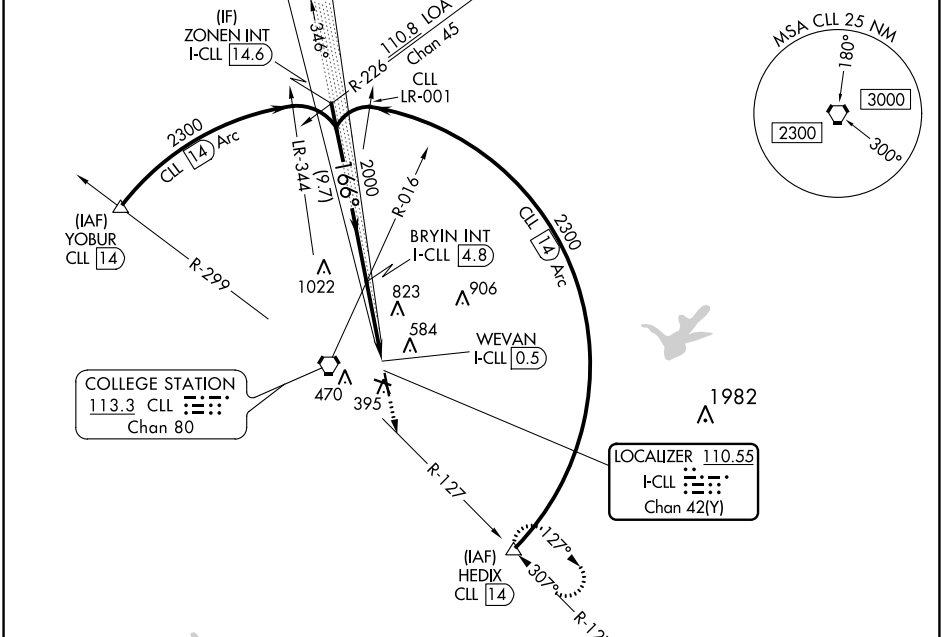
EASTERWOOD FIELD (CLL)

DME required.

**MISSED APPROACH:** Climb to 2000 on heading 166° and CLL R-127 to HEDIX/CLL 14 DME and hold.

Rwy 17 helicopter visibility reduction below 3/4 SM NA.

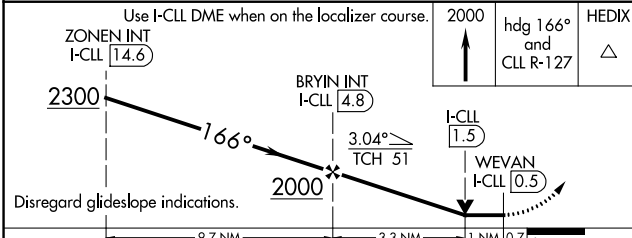
ATIS <b>126.85</b>	HOUSTON APP CON <b>134.3 360.85</b>	EASTERWOOD TOWER ★ <b>118.5 (CTAF) 284.7</b>	GND CON <b>128.7 284.7</b>	CLNC DEL <b>128.7</b>	CLNC DEL <b>120.4</b> (when twr closed)	UNICOM <b>122.95</b>
-----------------------	----------------------------------------	-------------------------------------------------	-------------------------------	--------------------------	-----------------------------------------------	-------------------------



SC-5, 25 FEB 2021 to 25 MAR 2021

SC-5, 25 FEB 2021 to 25 MAR 2021

## BACK COURSE



ELEV 321	<b>D</b> TDZE 321
----------	-------------------

Diagram of the runway layout showing RWY 17, RWY 29, RWY 11-29, and RWY 17-35. Distances from FAF are 166° 4.3 NM, 51.58 X 1.30, 7000 X 1.46, and 35.

REIL Rwy 29	MIRL Rwy 11-29 <b>L</b>	TWR 388
HIRL Rwy 17-35 <b>L</b>		

FAF to MAP 4.3 NM

Knots	60	90	120	150	180
Min:Sec	4:18	2:52	2:09	1:43	1:26

CATEGORY	A	B	C	D	E
S-LOC 17	940-1	619 (700-1)	940-1 3/4	619 (700-1 3/4)	
<b>C</b> CIRCLING	940-1	619 (700-1)	1000-2 679 (700-2)	1180-2 3/4 859 (900-2 3/4)	1180-3 859 (900-3)