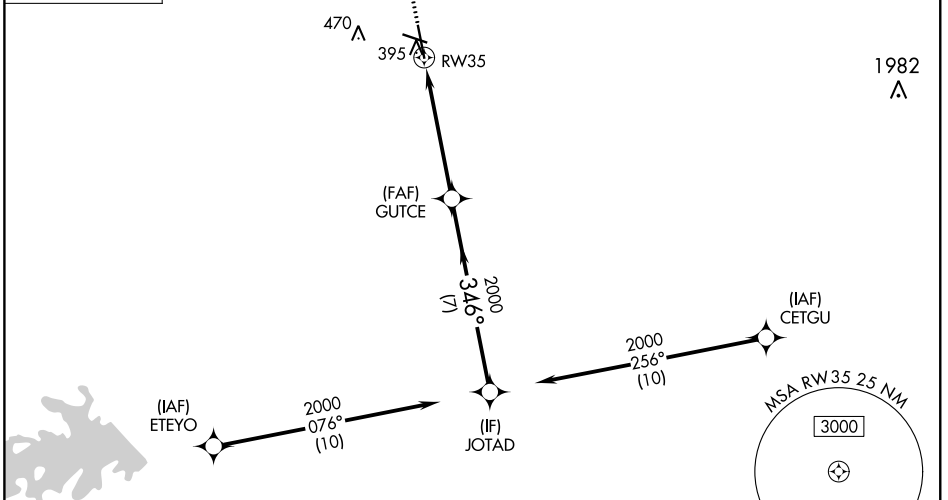
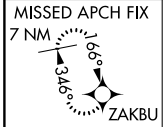


WAAS CH 63122 W35A	APP CRS 346°	Rwy Idg TDZE Apt Elev	7000 311 321
--	------------------------	-----------------------------	---

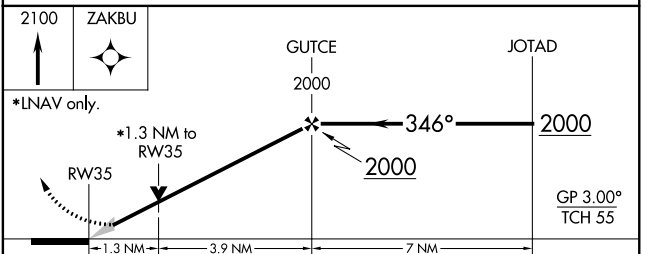
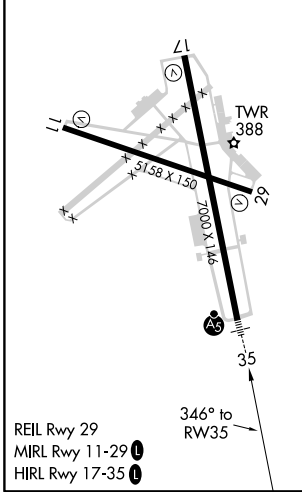
RNAV (GPS) RWY 35

EASTERWOOD FIELD (CLL)

RNP APCH.		EASTERWOOD TOWER ★		GND CON	CLNC DEL	CLNC DEL	UNICOM
<p>▼ For uncompensated Baro-VNAV systems, LNAV/VNAV NA below -3°C or above 54°C. For inop ALS, increase LPV Cat E and LNAV/VNAV all Cats visibility to ¾ SM, increase LNAV Cat E visibility to 1¾ SM.</p>		<p>118.5 (CTAF) 0 284.7</p>		<p>128.7 284.7</p>	<p>128.7</p>	<p>120.4 (when twr closed)</p>	<p>122.95</p>



ELEV 321	D	TDZE 311
----------	----------	----------



CATEGORY	A	B	C	D	E
LPV DA		511-½	200 (200-½)		
LNAV/VNAV DA		563-½	252 (300-½)		
LNAV MDA	760-½	449 (500-½)	760-⅞	449 (500-⅞)	
C CIRCLING	860-1 539 (600-1)	880-1 559 (600-1)	1000-2 679 (700-2)	1180-2¾ 859 (900-2¾)	1180-3 859 (900-3)

SC-5, 25 FEB 2021 to 25 MAR 2021

SC-5, 25 FEB 2021 to 25 MAR 2021