

LOC I-DQG	APP CRS	Rwy Idg	10000
<b>111.7</b>	<b>003°</b>	TDZE	<b>707</b>
		Apt Elev	<b>748</b>

# ILS RWY 36C (CAT II & III)

CHARLOTTE/DOUGLAS INTL (CLT)

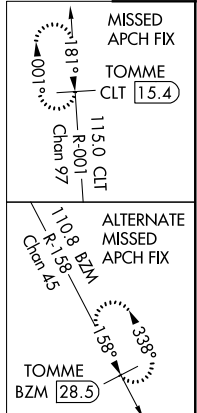
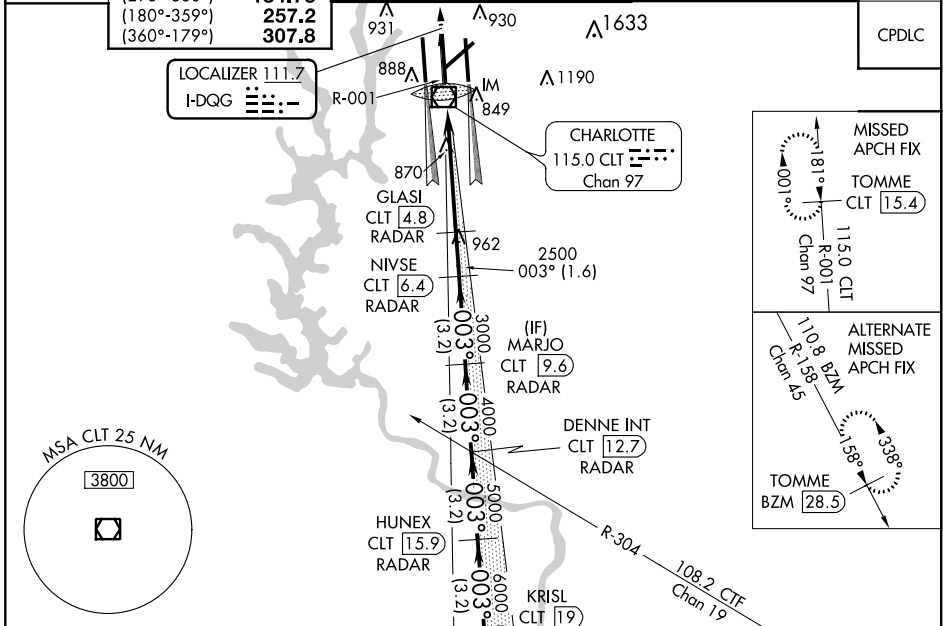
RADAR required for procedure entry. DME or RADAR required.

ALSF-2

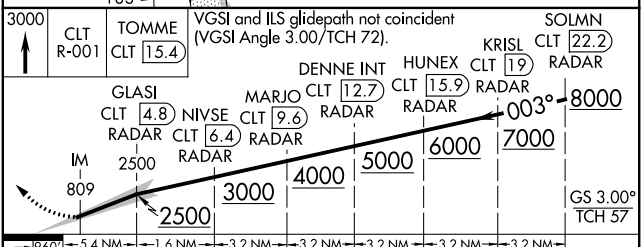
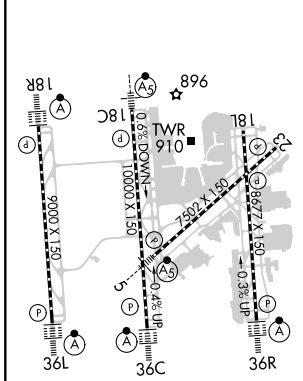
MISSED APPROACH: Climb to 3000 on CLT VOR/DME R-001 to TOMME/CLT 15.4 DME and hold.

Simultaneous approach authorized.  
DQG ILS LLZ Rwy 36C unusable for rollout guidance.

D-ATIS	CHARLOTTE APP CON	CHARLOTTE TOWER	GND CON	CLNC DEL
ARR <b>121.15</b>	(001°-119°) <b>128.32</b>	(Rwys 18L-36R, 5-23) <b>118.1</b> <b>257.8</b>	<b>121.8 348.6</b> (WEST)	<b>127.15</b>
DEP <b>132.1</b>	(120°-295°) <b>120.05</b>	(Rwy 18C-36C) <b>126.4</b> <b>257.8</b>	<b>121.9 348.6</b> (EAST)	<b>348.6</b>
	(296°-360°) <b>134.75</b>	(Rwy 18R-36L) <b>133.35</b> <b>257.8</b>		
	(180°-359°) <b>257.2</b>			
	(360°-179°) <b>307.8</b>			



ELEV 748	D	TDZE 707
----------	---	----------



CATEGORY	A	B	C	D
S-ILS 36C	CAT II RA 126/12 100 DA 807			
S-ILS 36C	CAT IIIa RVR 07			
S-ILS 36C	CAT IIIb RVR 07			
S-ILS 36C	CAT IIIc NA			

## CATEGORY II & III ILS - SPECIAL AIRCREW & AIRCRAFT CERTIFICATION REQUIRED

SE-2, 25 FEB 2021 to 25 MAR 2021

SE-2, 25 FEB 2021 to 25 MAR 2021