

LOC/DME I-BQC 108.9 Chan 26	APP CRS 003°	Rwy Idg TDZE 727 Apt Elev 748	8390
--	------------------------	---	-------------

ILS RWY 36R (SA CAT I)

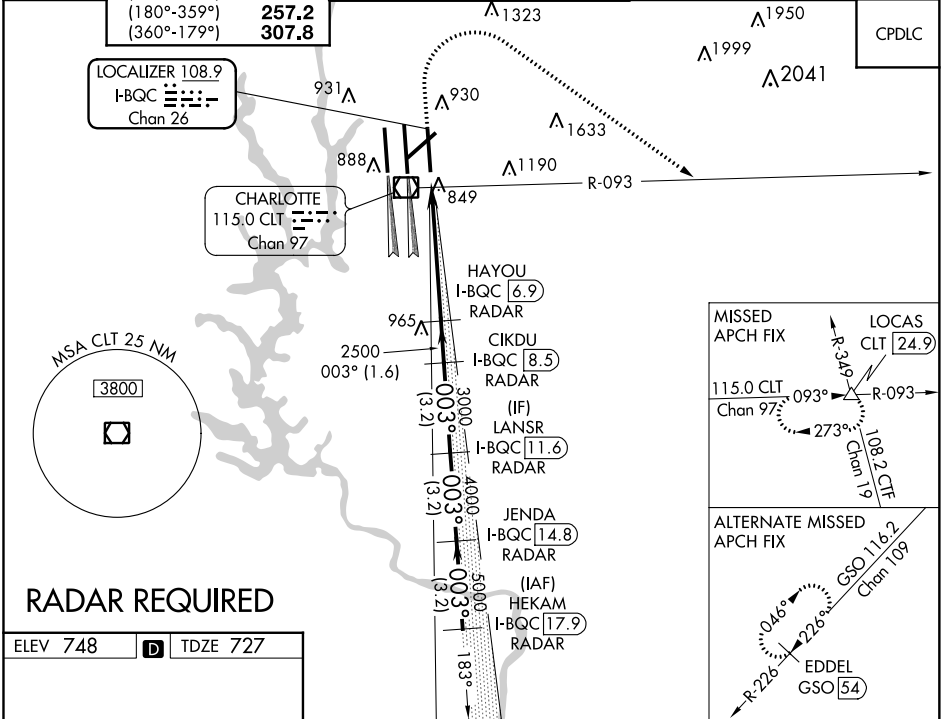
CHARLOTTE/DOUGLAS INTL (CLT)

Simultaneous approach authorized.
DME or RADAR required. Requires specific OPSPEC, MSPEC or LOA approval and use of HUD to DH.

ALS-F-2

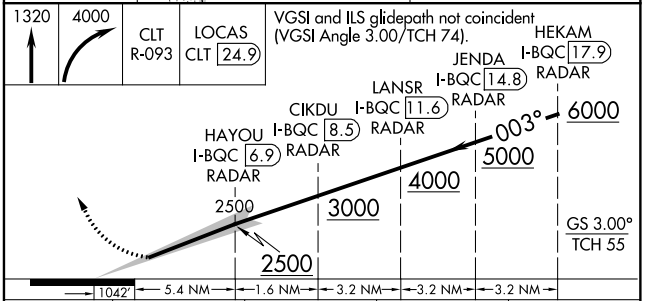
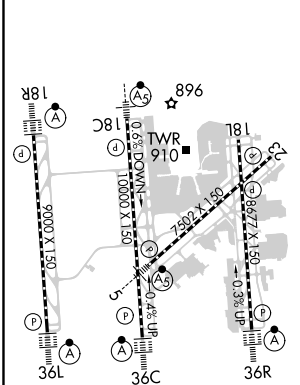
MISSED APPROACH: Climb to 1320 then climbing right turn to 4000 on CLT VOR/DME R-093 to LOCAS INT/24.9 DME and hold.

D-ATIS ARR 121.15 DEP 132.1	CHARLOTTE APP CON 128.32 (001°-119°) 120.05 (120°-295°) 134.75 (296°-360°) 257.2 (180°-359°) 307.8 (360°-179°)	CHARLOTTE TOWER (Rwys 18L-36R, 5-23) 118.1 257.8 (Rwy 18C-36C) 126.4 257.8 (Rwy 18R-36L) 133.35 257.8	GND CON 121.8 348.6 (WEST) 121.9 348.6 (EAST)	CLNC DEL 127.15 348.6
---	---	---	---	---



RADAR REQUIRED

ELEV 748	D	TDZE 727
----------	----------	----------



CATEGORY	A	B	C	D
S-ILS 36R	RA 173/14 150 DA 877			

SA CATEGORY I ILS SPECIAL AIRCREW & AIRCRAFT CERTIFICATION REQUIRED

HIRL all Rwys
REIL Rwys 18L and 23
TDZ/CL Rwys 18R, 36L, 36C and 36R