

LOC/DME I-APU 109.5 Chan 32	APP CRS 235°	Rwy Idg TDZE Apt Elev	7502 747 748
---	------------------------	-----------------------------	---

ILS or LOC RWY 23

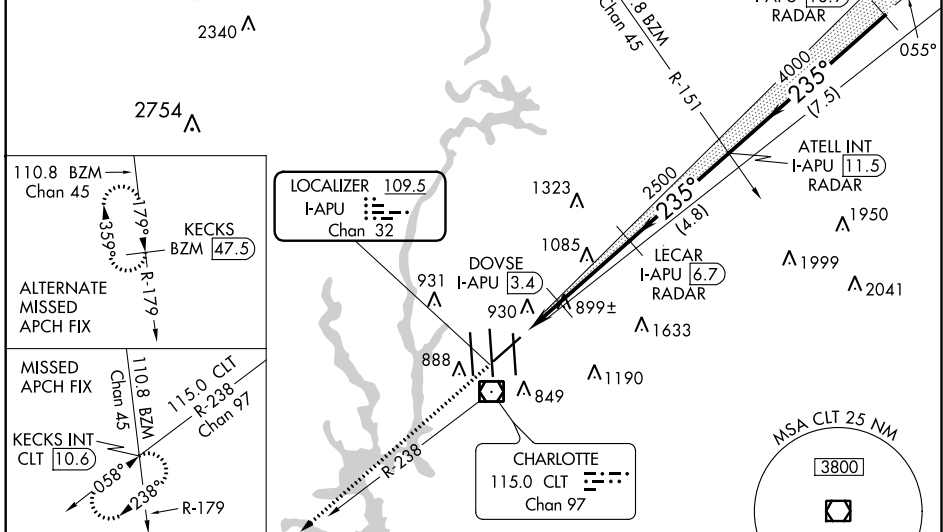
CHARLOTTE/DOUGLAS INTL (CLT)

DME or RADAR required.

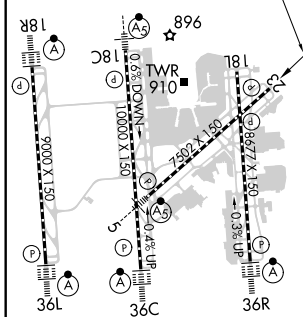
MISSED APPROACH: Climb to 4000 via heading 235° and CLT R-238 to KECKS INT/CLT 10.6 DME and hold, continue climb-in-hold to 4000.

D-ATIS ARR 121.15 DEP 132.1	CHARLOTTE APP CON (001°-119°) 128.32 (120°-295°) 120.05 (296°-360°) 134.75 (180°-359°) 257.2 (360°-179°) 307.8	CHARLOTTE TOWER (Rwys 18L-36R, 5-23) 118.1 257.8 (Rwy 18C-36C) 126.4 257.8 (Rwy 18R-36L) 133.35 257.8	GND CON 121.8 348.6 (WEST) 121.9 348.6 (EAST)	CLNC DEL 127.15 348.6
---	--	---	---	---

RADAR REQUIRED



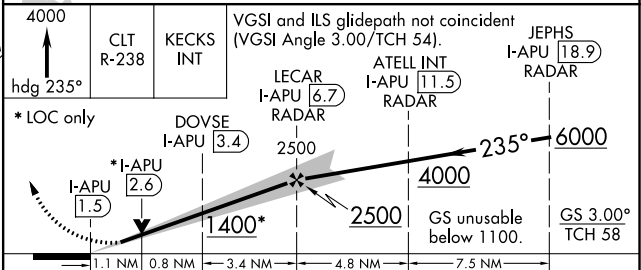
ELEV 748	D	TDZE 747
-----------------	----------	-----------------



HIRL all Rwys
REIL Rwys 18L and 23
TDZ/CL Rwys 18R, 36L, 36C and 36R

FAF to MAP 5.3 NM

Knots	60	90	120	150	180
Min:Sec	5:18	3:32	2:39	2:07	1:46



CATEGORY	A	B	C	D
S-ILS 23	1100-1¼ 353 (400-1¼)			
S-LOC 23	1400/50	653 (700-1)	1400-1¾ 653 (700-1¾)	1400-2 653 (700-2)
DOVSE FIX MINIMUMS				
S-LOC 23	1160/50	413 (500-1)	1160/60	413 (500-1¼)

SE-2, 25 FEB 2021 to 25 MAR 2021

SE-2, 25 FEB 2021 to 25 MAR 2021