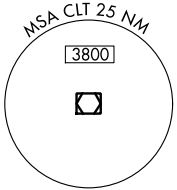
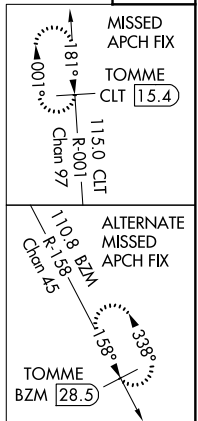
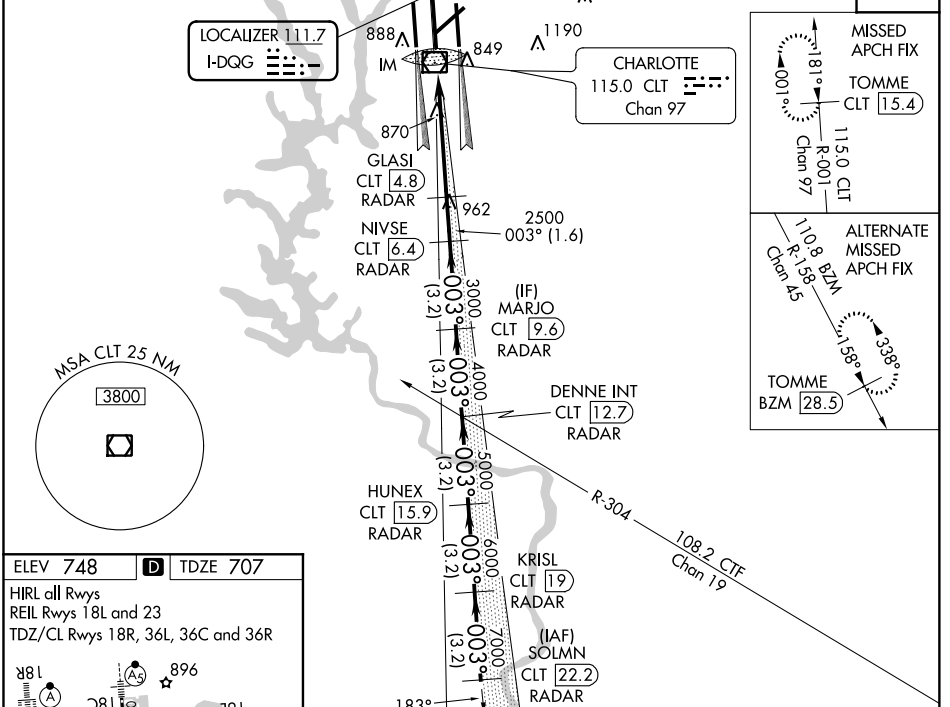


LOC I-DQG	APP CRS	Rwy Idg	10000
111.7	003°	TDZE	707
		Apt Elev	748

ILS or LOC RWY 36C

CHARLOTTE/DOUGLAS INTL (CLT)

RADAR required for procedure entry. DME or RADAR required.		ALSF-2	MISSED APPROACH: Climb to 3000 on CLT VOR/DME R-001 to TOMME/CLT 15.4 DME and hold.		
D-ATIS	CHARLOTTE APP CON	CHARLOTTE TOWER		GND CON	CLNC DEL
ARR 121.15	(001°-119°) 128.32	(Rwys 18L-36R, 5-23) 118.1	257.8	121.8 348.6 (WEST)	127.15
DEP 132.1	(120°-295°) 120.05	(Rwy 18C-36C) 126.4	257.8	121.9 348.6 (EAST)	348.6
	(296°-360°) 134.75	(Rwy 18R-36L)	133.35 257.8		
	(180°-359°) 257.2				
	(360°-179°) 307.8				



ELEV 748	D	TDZE 707			
HIRL all Rwys					
REIL Rwys 18L and 23					
TDZ/CL Rwys 18R, 36L, 36C and 36R					
FAF to MAP 5.4 NM					
Knots	60	90	120	150	180
Min:Sec	5:24	3:36	2:42	2:10	1:48

3000	CLT R-001	TOMME CLT 15.4	VGSi and ILS glidepath not coincident (VGSi Angle 3.00/TCH 72).		SOLMN CLT 22.2
8000	GLASI CLT 4.8	NIVSE CLT 6.4	MARJO CLT 9.6	DENNE INT CLT 12.7	HUNEX CLT 15.9
7000	IM	2500	3000	4000	5000
6000	0.2 NM	0.2 NM	0.2 NM	0.2 NM	0.2 NM
5000	0.2 NM	0.2 NM	0.2 NM	0.2 NM	0.2 NM
4000	0.2 NM	0.2 NM	0.2 NM	0.2 NM	0.2 NM
3000	0.2 NM	0.2 NM	0.2 NM	0.2 NM	0.2 NM
2500	0.2 NM	0.2 NM	0.2 NM	0.2 NM	0.2 NM
003°	0.2 NM	0.2 NM	0.2 NM	0.2 NM	0.2 NM
GS 3.00°	0.2 NM	0.2 NM	0.2 NM	0.2 NM	0.2 NM
TCH 57	0.2 NM	0.2 NM	0.2 NM	0.2 NM	0.2 NM
CATEGORY	A		B		C
S-ILS 36C	907/18		200 (200-1/2)		
S-LOC 36C	1120/24		413 (400-1/2)		
C CIRCLING	1380-1 632 (700-1)		1500-2 1/4 752 (800-2 1/4)		1500-2 1/2 752 (800-2 1/2)

SE-2, 25 FEB 2021 to 25 MAR 2021

SE-2, 25 FEB 2021 to 25 MAR 2021