

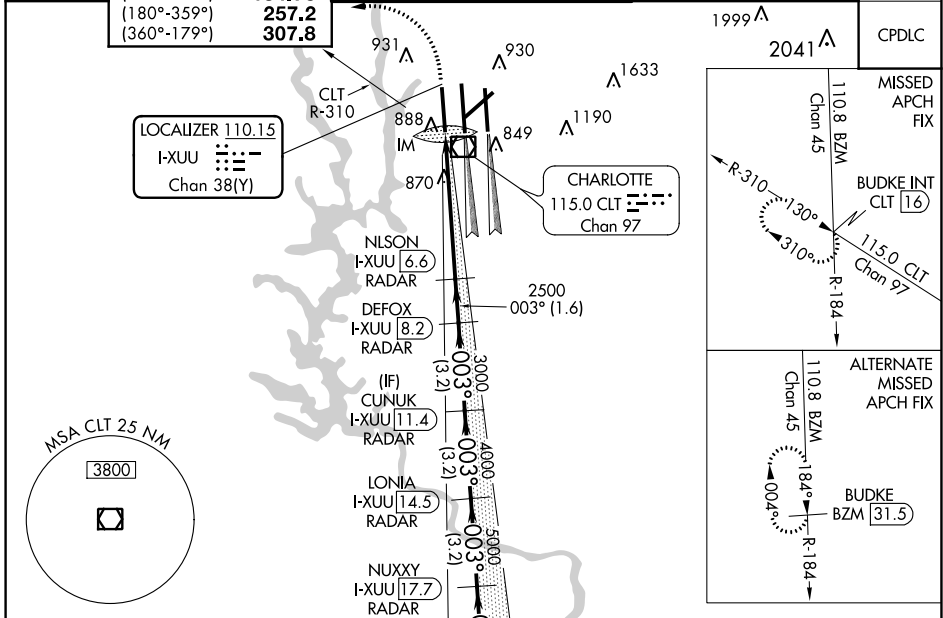
LOC/DME I-XUU <b>110.15</b> Chan 38(Y)	APP CRS <b>003°</b>	Rwy Idg TDZE <b>9000 744</b> Apt Elev <b>748</b>
--	------------------------	---

# ILS or LOC RWY 36L

CHARLOTTE/DOUGLAS INTL (CLT)

<p><b>⚠</b> Circling NA at night. Simultaneous approach authorized.</p> <p><b>⚠</b> DME or RADAR required.</p>	<p>ALSF-2</p>	<p>MISSED APPROACH: Climb to 1200 then climbing left turn to 4000 on CLT VOR/DME R-310 to BUDKE/CLT 16 DME and hold.</p>
--	---------------	--

D-ATIS ARR <b>121.15</b> DEP <b>132.1</b>	CHARLOTTE APP CON (001°-119°) <b>128.32</b> (120°-295°) <b>120.05</b> (296°-360°) <b>134.75</b> (180°-359°) <b>257.2</b> (360°-179°) <b>307.8</b>	CHARLOTTE TOWER (Rwys 18L-36R, 5-23) <b>118.1 257.8</b> (Rwy 18C-36C) <b>126.4 257.8</b> (Rwy 18R-36L) <b>133.35 257.8</b>	GND CON <b>121.8 348.6</b> (WEST) <b>121.9 348.6</b> (EAST)	CLNC DEL <b>127.15</b> <b>348.6</b>
---	--	---	---	---



ELEV 748	<b>D</b>	TDZE 744			
HIRL all Rws REIL Rws 18L and 23 TDZ/CL Rws 18R, 36L, 36C and 36R					
FAF to MAP 5.3 NM					
Knots	60	90	120	150	180
Min:Sec	5:18	3:32	2:39	2:07	1:46

<p><b>RADAR REQUIRED</b></p> <p>VGSI and ILS glidepath not coincident (VGSI Angle 3.00/TCH 70).</p>		WELET I-XUU [20.8] RADAR		
<p>*LOC only.</p> <p>I-XUU [1.3] IM</p> <p>*I-XUU [2.5] 2500</p> <p>NLSN I-XUU [6.6] RADAR</p> <p>DEFOX I-XUU [8.2] RADAR</p> <p>CUNUK I-XUU [11.4] RADAR</p> <p>LONIA I-XUU [14.5] RADAR</p> <p>NUXXY I-XUU [17.7] RADAR</p>		<p>7000</p> <p>6000</p> <p>5000</p> <p>4000</p> <p>3000</p> <p>2500</p> <p>GS 3.00° TCH 55</p>		
CATEGORY	A	B	C	D
S-ILS 36L	944/18 200 (200-½)			
S-LOC 36L	1180/24	436 (500-½)	1180/40	436 (500-¾)
<b>C</b> CIRCLING	1380-1	632 (700-1)	1500-2¼	1500-2½

SE-2, 25 FEB 2021 to 25 MAR 2021

SE-2, 25 FEB 2021 to 25 MAR 2021