

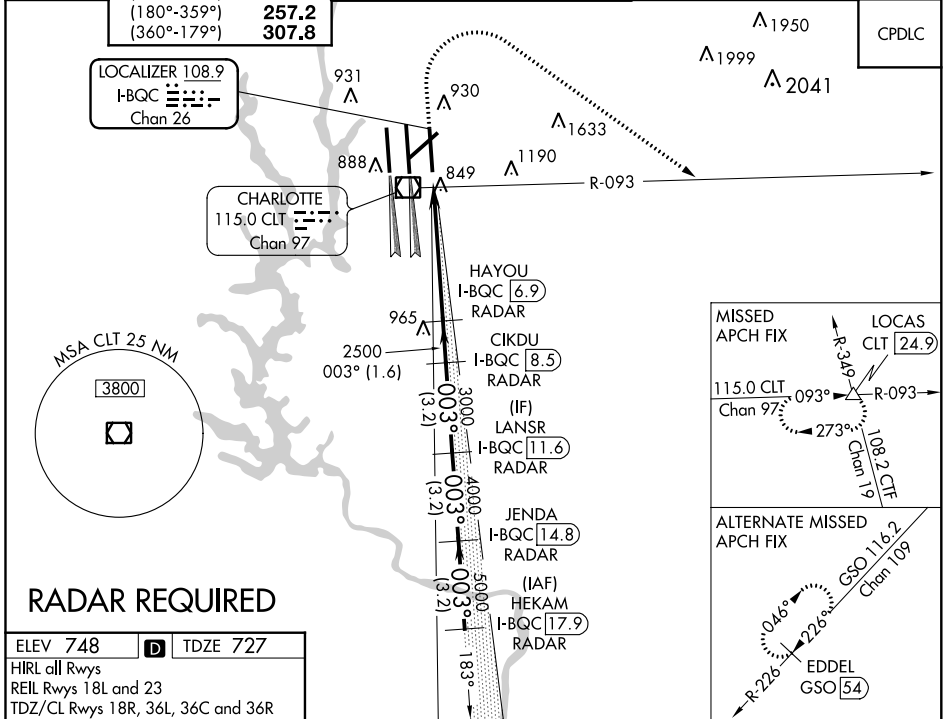
LOC/DME I-BQC 108.9 Chan 26	APP CRS 003°	Rwy Idg TDZE 727 Apt Elev 748
---	------------------------	---

ILS or LOC RWY 36R

CHARLOTTE/DOUGLAS INTL (CLT)

	ALS-F-2	MISSED APPROACH: Climb to 1320 then climbing right turn to 4000 on CLT VOR/DME R-093 to LOCAS INT/24.9 DME and hold.

D-ATIS ARR 121.15 DEP 132.1	CHARLOTTE APP CON (001°-119°) 128.32 (120°-295°) 120.05 (296°-360°) 134.75 (180°-359°) 257.2 (360°-179°) 307.8	CHARLOTTE TOWER (Rwys 18L-36R, 5-23) 118.1 257.8 (Rwy 18C-36C) 126.4 257.8 (Rwy 18R-36L) 133.35 257.8	GND CON 121.8 348.6 (WEST) 121.9 348.6 (EAST)	CLNC DEL 127.15 348.6
---	--	---	---	---



ELEV 748	D	TDZE 727			
HIRL all Rwys REIL Rwys 18L and 23 TDZ/CL Rwys 18R, 36L, 36C and 36R					
FAF to MAP 5.4 NM					
Knots	60	90	120	150	180
Min:Sec	5:24	3:36	2:42	2:10	1:48

1320	4000	CLT R-093	LOCAS CLT [24.9]	VGSJ and ILS glidepath not coincident (VGSJ Angle 3.00/TCH 74).															
*LOC only.																			
<table border="1"> <thead> <tr> <th>CATEGORY</th> <th>A</th> <th>B</th> <th>C</th> <th>D</th> </tr> </thead> <tbody> <tr> <td>S-ILS 36R</td> <td colspan="4">927/18 200 (200-½)</td> </tr> <tr> <td>S-LOC 36R</td> <td>1120/24</td> <td>393 (400-½)</td> <td>1120/35</td> <td>393 (400-¾)</td> </tr> </tbody> </table>					CATEGORY	A	B	C	D	S-ILS 36R	927/18 200 (200-½)				S-LOC 36R	1120/24	393 (400-½)	1120/35	393 (400-¾)
CATEGORY	A	B	C	D															
S-ILS 36R	927/18 200 (200-½)																		
S-LOC 36R	1120/24	393 (400-½)	1120/35	393 (400-¾)															
<table border="1"> <thead> <tr> <th>☑ CIRCLING</th> <th>1380-1</th> <th>632 (700-1)</th> <th>1500-2¼</th> <th>752 (800-2¼)</th> <th>1500-2½</th> <th>752 (800-2½)</th> </tr> </thead> </table>					☑ CIRCLING	1380-1	632 (700-1)	1500-2¼	752 (800-2¼)	1500-2½	752 (800-2½)								
☑ CIRCLING	1380-1	632 (700-1)	1500-2¼	752 (800-2¼)	1500-2½	752 (800-2½)													

SE-2, 25 FEB 2021 to 25 MAR 2021

SE-2, 25 FEB 2021 to 25 MAR 2021