

KNIGHTS TWO DEPARTURE

CHARLOTTE/DOUGLAS INTL (CLT)
CHARLOTTE, NORTH CAROLINA

D-ATIS DEP 132.1
 CLNIC DEL
 127.15 348.6
 CPDLC
 GND CON
 121.8 348.6 (WEST)
 121.9 348.6 (EAST)
 CHARLOTTE TOWER
 118.1 257.8 (Rwys 18L-36R, 5-23)
 126.4 257.8 (Rwy 18C-36C)
 133.35 257.8 (Rwy 18R-36L)

NORTHWEST CHARLOTTE DEP CON	
120.05	257.2 (DEBIE, NEANO TRANSITIONS)
120.05	257.2 (FLYNN, CEGAL TRANSITIONS Rws 18C/L/R, 23)
120.5	257.2 (FLYNN, CEGAL TRANSITIONS Rws 5, 36L/C/R)

TOP ALTITUDE:
4000

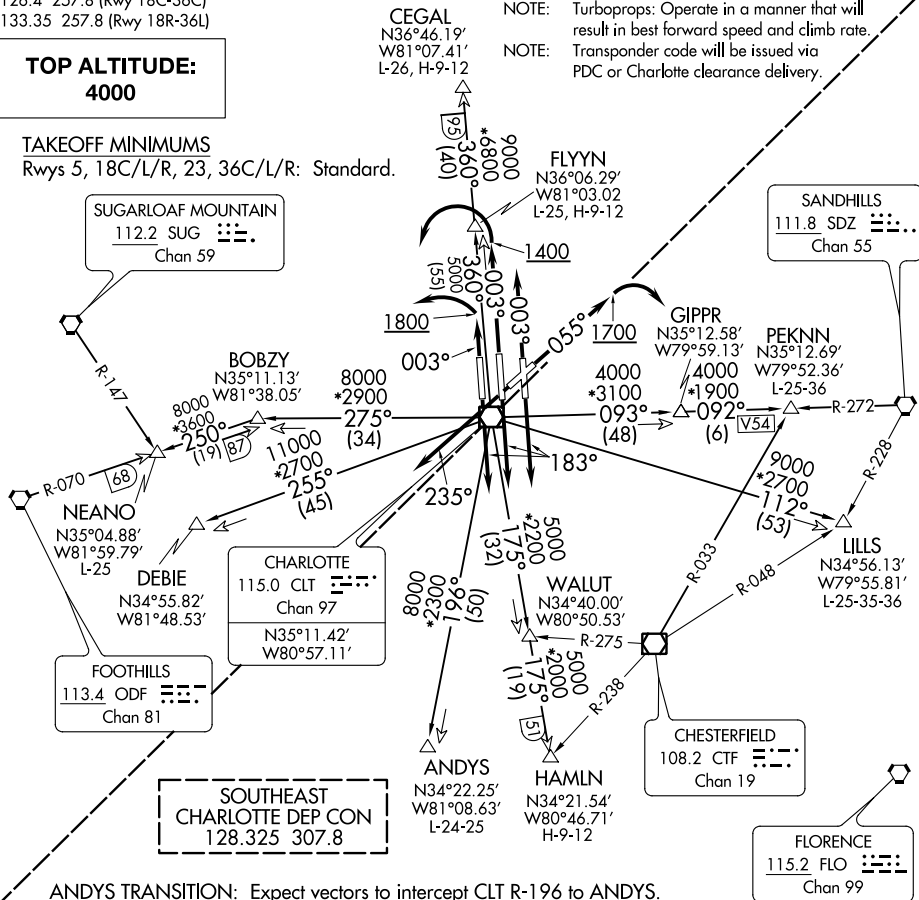
TAKEOFF MINIMUMS

Rwys 5, 18C/L/R, 23, 36C/L/R: Standard.

- NOTE: For propeller aircraft only.
- NOTE: RADAR and DME required.
- NOTE: Turboprops: Operate in a manner that will result in best forward speed and climb rate.
- NOTE: Transponder code will be issued via PDC or Charlotte clearance delivery.

SUGARLOAF MOUNTAIN
 112.2 SUG
 Chan 59

SANDHILLS
 111.8 SDZ
 Chan 55



- ANDYS TRANSITION: Expect vectors to intercept CLT R-196 to ANDYS.
- CEGAL TRANSITION: Expect vectors to intercept CLT R-360 to CEGAL.
- DEBIE TRANSITION: Expect vectors to intercept CLT R-255 to DEBIE.
- FLYNN TRANSITION: Expect vectors to intercept CLT R-360 to FLYNN.
- HAMLN TRANSITION: Expect vectors to intercept CLT R-175 to HAMLN.
- LILLS TRANSITION: Expect vectors to intercept CLT R-112 to LILLS.
- NEANO TRANSITION: Expect vectors to intercept CLT R-275 to BOBZY then ODF R-070 to NEANO.
- PEKNN TRANSITION: Expect vectors to intercept CLT R-093 to GIPPR then SDZ R-272 to PEKNN.

NOTE: Chart not to scale.

(NARRATIVE ON FOLLOWING PAGE)

KNIGHTS TWO DEPARTURE

CHARLOTTE, NORTH CAROLINA
CHARLOTTE/DOUGLAS INTL (CLT)

SE-2, 25 FEB 2021 to 25 MAR 2021

SE-2, 25 FEB 2021 to 25 MAR 2021