

(KRITR5.KRITR) 19059

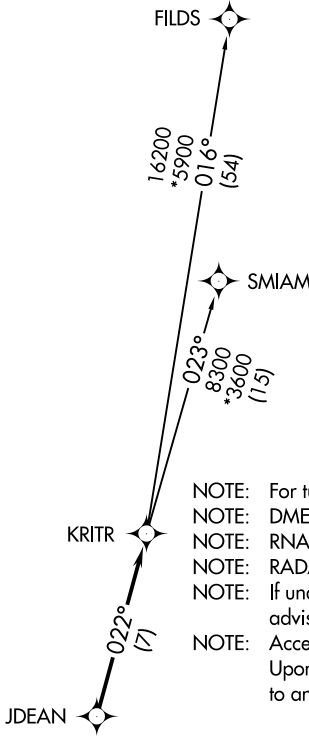
AL-78 (FAA)

CHARLOTTE/DOUGLAS INTL (CLT)  
CHARLOTTE, NORTH CAROLINA

# KRITR FIVE DEPARTURE (RNAV)

D-ATIS DEP 132.1  
 CLNC DEL  
 127.15 348.6  
 CPDLC  
 GND CON  
 121.8 348.6 (WEST)  
 121.9 348.6 (EAST)  
 CHARLOTTE TOWER  
 118.1 257.8 (Rwys 18L-36R, 5-23)  
 126.4 257.8 (Rwy 18C-36C)  
 133.35 257.8 (Rwy 18R-36L)  
 CHARLOTTE DEP CON  
 120.5 257.2

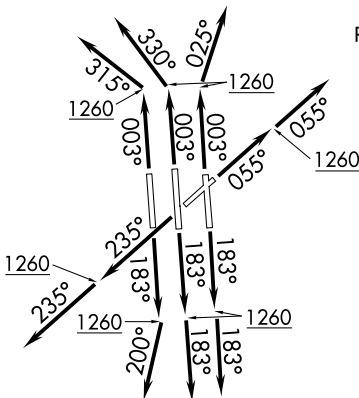
**TOP ALTITUDE:  
8000**



- NOTE: For turbojets only.
- NOTE: DME/DME/IRU or GPS required.
- NOTE: RNAV 1.
- NOTE: RADAR required.
- NOTE: If unable to accept climb rates, advise ATC on initial contact.
- NOTE: Accelerate to 250K, if unable advise ATC. Upon reaching 10000 MSL, accelerate to and maintain 280K, if unable advise ATC.

### TAKEOFF MINIMUMS

- Rwys 18C/L/R, 23, 36C/R: Standard with minimum climb of 500' per NM to 1260.
- Rwy 5: Standard with minimum climb of 500' per NM to 1300.
- Rwy 36L: Standard with minimum climb of 500' per NM to 1400.



(NARRATIVE ON FOLLOWING PAGE)

NOTE: Chart not to scale.

SE-2, 25 FEB 2021 to 25 MAR 2021

SE-2, 25 FEB 2021 to 25 MAR 2021

# KRITR FIVE DEPARTURE (RNAV)

(KRITR5.KRITR) 03JAN19

CHARLOTTE, NORTH CAROLINA  
CHARLOTTE/DOUGLAS INTL (CLT)