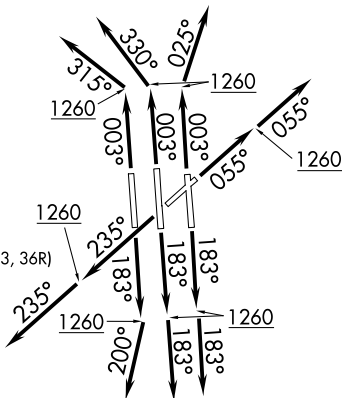


# KWEEN FOUR DEPARTURE (RNAV)

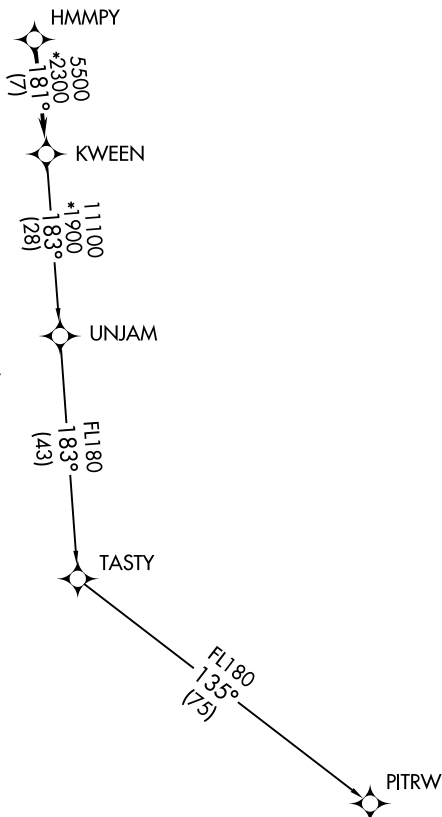
**TOP ALTITUDE:  
8000**

D-ATIS DEP 132.1  
 CLNC DEL  
 127.15 348.6  
 CPDLC  
 GND CON  
 121.8 348.6 (WEST)  
 121.9 348.6 (EAST)  
 CHARLOTTE TOWER  
 118.1 257.8 (Rwys 18L-36R, 5-23)  
 126.4 257.8 (Rwy 18C-36C)  
 133.35 257.8 (Rwy 18R-36L)  
 CHARLOTTE DEP CON  
 120.5 257.2 (Rwys 36C, 36L)  
 124.0 307.8 (Rwys 5, 18C, 18L, 18R, 23, 36R)



SE-2, 25 FEB 2021 to 25 MAR 2021

- NOTE: For turbojets only.
- NOTE: DME/DME/IRU or GPS required.
- NOTE: RNAV 1.
- NOTE: RADAR required.
- NOTE: If unable to accept climb rates, advise ATC on initial contact.
- NOTE: Accelerate to 250K, if unable advise ATC. Upon reaching 10000 MSL, accelerate to and maintain 280K, if unable advise ATC.
- NOTE: Transponder code will be issued via PDC or Charlotte CLNC DEL.



SE-2, 25 FEB 2021 to 25 MAR 2021

### TAKEOFF MINIMUMS

Rwys 18C/L/R, 23, 36C/L/R: Standard with minimum climb of 500' per NM to 1260.  
 Rwy 5: Standard with minimum climb of 500' per NM to 1300.

NOTE: Chart not to scale.

(NARRATIVE ON FOLLOWING PAGE)

# KWEEN FOUR DEPARTURE (RNAV)