

MLLET TWO ARRIVAL (RNAV)

CHARLOTTE, NORTH CAROLINA

CHARLOTTE APP CON
126.15 282.325
D-ATIS ARR 121.115

ARRIVAL ROUTE DESCRIPTION

OKNEE TRANSITION (OKNEE.MLLET2)
TORQD TRANSITION (TORQD.MLLET2)

CLT: From RYFLE on track 308° to YELLS, then on track 308° to MLLET, then on track 306° to MANGY.

LANDING RWYS 18L/C/R: From MANGY on track 306° to CEZUN, then on track 306° to DOOMY, then on track 326° to POORE, then on track 003° to LEEKS, then on track 003° to INNOR, then on track 003° to HANDO, then on track 003°. Expect RADAR vectors to final approach course.

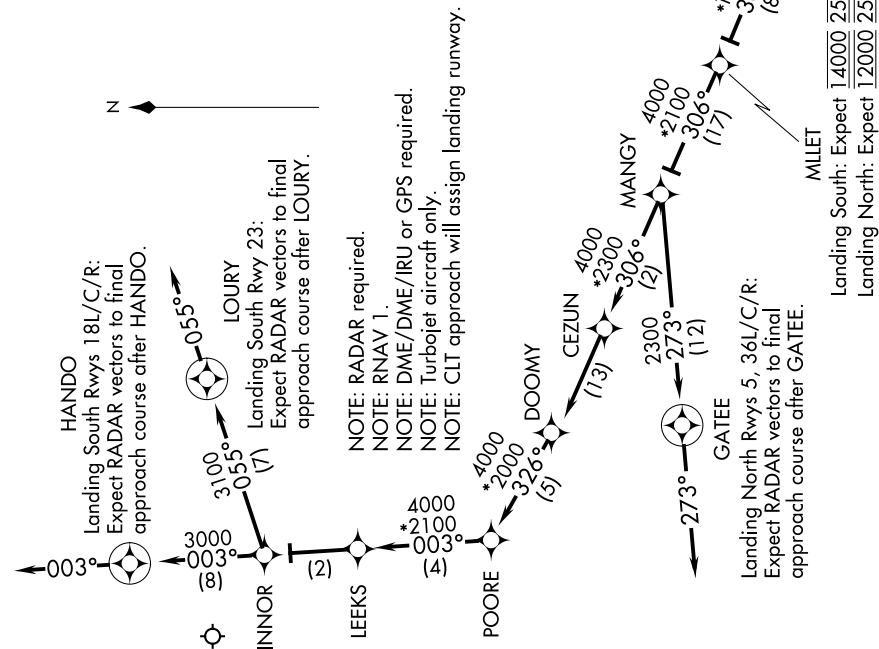
LANDING RWY 23: From MANGY on track 306° to CEZUN, then on track 306° to DOOMY, then on track 326° to POORE, then on track 003° to LEEKS, then on track 003° to INNOR, then on track 055° to LOURY, then on track 055°. Expect RADAR vectors to final approach course.

LANDING RWYS 5, 36L/C/R: From MANGY on track 273° to GATEE, then on track 273°. Expect RADAR vectors to final approach course.

NOTE: Chart not to scale.

SE-2, 25 FEB 2021 to 25 MAR 2021

SE-2, 25 FEB 2021 to 25 MAR 2021



MLLET TWO ARRIVAL (RNAV)

(RYFLE.MLLET2) 27APR17

CHARLOTTE, NORTH CAROLINA

CHARLOTTE/DOUGLAS INTL (CLT)