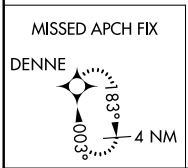
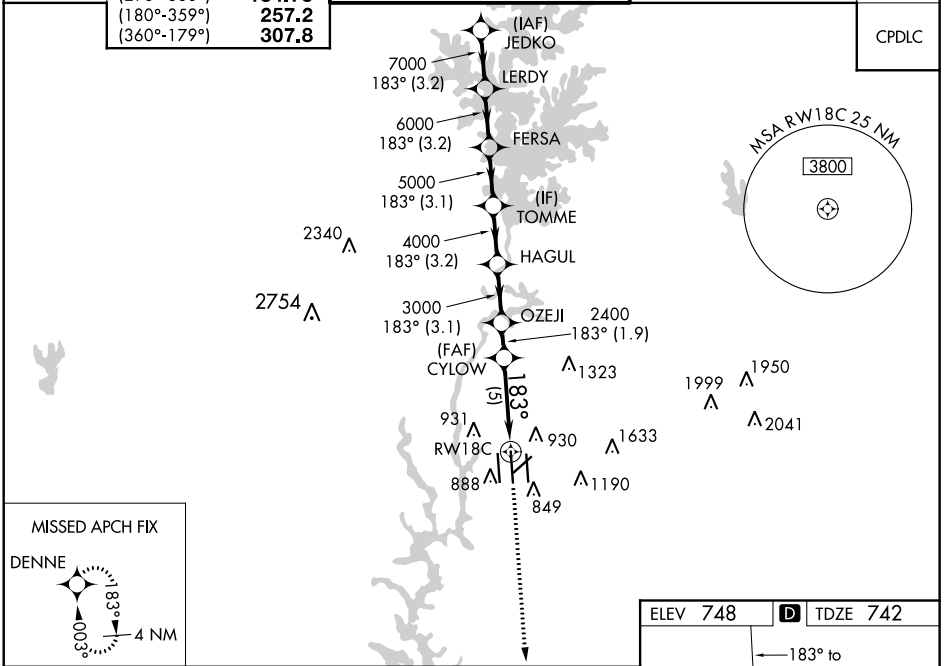


APP CRS	Rwy Idg 10000
183°	TDZE 742
	Apt Elev 748

RNAV (RNP) Z RWY 18C

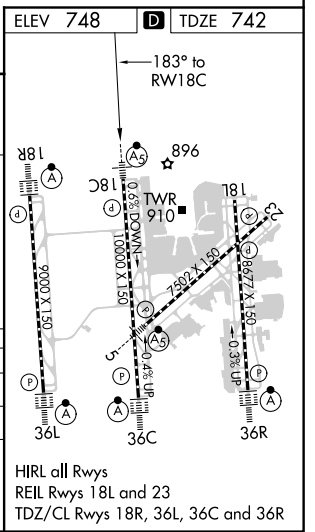
CHARLOTTE/DOUGLAS INTL (CLT)

RNP AR APCH.		MALSRL	MISSED APPROACH: Climb to 3000 direct DENNE and hold.	
<p>Simultaneous approach authorized. For uncompensated Baro-VNAV systems, procedure NA below -11°C or above 54°C.</p>				
D-ATIS	CHARLOTTE APP CON	CHARLOTTE TOWER	GND CON	CLNC DEL
ARR 121.15	(001°-119°) 128.325	(Rwys 18L-36R, 5-23) 118.1 257.8	121.8 348.6 (WEST)	127.15
DEP 132.1	(120°-295°) 120.05	(Rwy 18C-36C) 126.4 257.8	121.9 348.6 (EAST)	348.6
	(296°-360°) 134.75	(Rwy 18R-36L) 133.35 257.8		
	(180°-359°) 257.2			
	(360°-179°) 307.8			



VGSI and RNAV glidepath not coincident (VGSI Angle 3.00/TCH 69).

JEDKO	LERDY	FERSA	TOMME	HAGUL	OZEJI	CYLOW	RW18C
8000	7000	6000	5000	4000	3000	2400	
	3.2 NM	3.1 NM	3.2 NM	3.1 NM	1.9 NM	5 NM	
GP 3.00°	TCH 55						
CATEGORY	A	B	C	D			
RNP 0.11 DA	1067/26		325 (400-½)				
RNP 0.30 DA	1177/40		435 (500-¾)				



AUTHORIZATION REQUIRED

SE-2, 25 FEB 2021 to 25 MAR 2021

SE-2, 25 FEB 2021 to 25 MAR 2021