

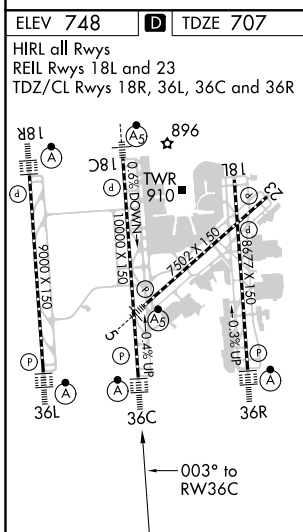
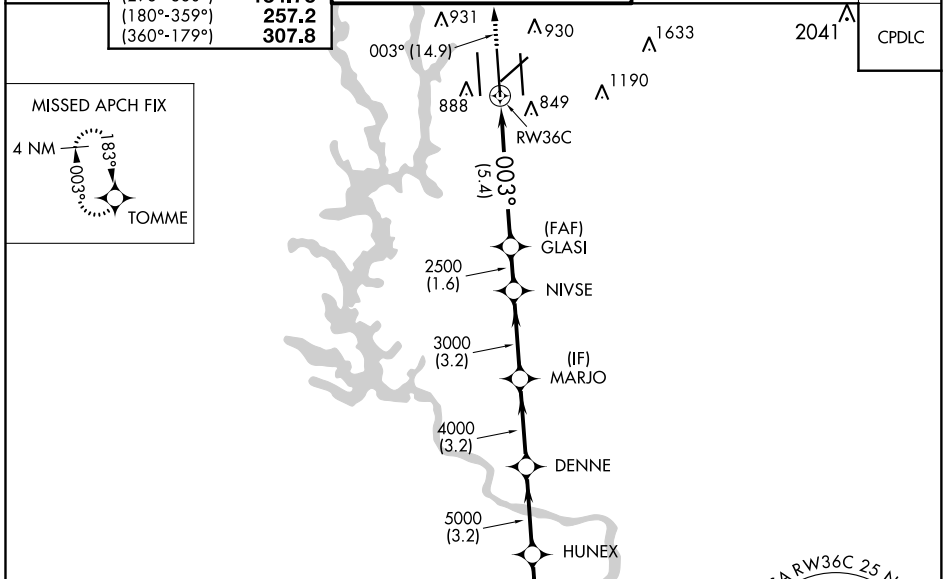
APP CRS	Rwy Idg	<b>10000</b>
<b>003°</b>	TDZE	<b>707</b>
	Apt Elev	<b>748</b>

# RNAV (RNP) Z RWY 36C

CHARLOTTE/DOUGLAS INTL (CLT)

RNP AR APCH.	<p>Simultaneous approach authorized. Use of FD or AP required during simultaneous operations. For uncompensated Baro-VNAV systems, procedure NA below -10°C or above 47°C. For inop ALS, increase RNP 0.11 visibility all Cats to RVR 6000 and RNP 0.30 visibility all Cats to 1/2 SM.</p>	<p>ALSF-2</p>	<p>MISSED APPROACH: Climb to 3000 on track 003° to TOMME and hold.</p>
--------------	--	---------------	--

D-ATIS	CHARLOTTE APP CON	CHARLOTTE TOWER	GND CON	CLNC DEL
ARR <b>121.15</b>	(001°-119°) <b>128.32</b>	(Rwys 18L-36R, 5-23) <b>118.1 257.8</b>	<b>121.8 348.6 (WEST)</b>	<b>127.15</b>
DEP <b>132.1</b>	(120°-295°) <b>120.05</b>	(Rwy 18C-36C) <b>126.4 257.8</b>	<b>121.9 348.6 (EAST)</b>	<b>348.6</b>
	(296°-360°) <b>134.75</b>	(Rwy 18R-36L) <b>133.35 257.8</b>		
	(180°-359°) <b>257.2</b>			
	(360°-179°) <b>307.8</b>			



3000	↑	tr	003°	TOMME	VGSI and RNAV glidepath not coincident (VGSI Angle 3.00/TCH 72).	SOLMN					
				GLASI	NIVSE	MARJO	DENNE	HUNEX	KRISL	SOLMN	
				2500	3000	4000	5000	6000	7000	8000	
				← 5.4 NM →	← 1.6 NM →	← 3.2 NM →	← 3.2 NM →	← 3.2 NM →	← 3.2 NM →	← 3.2 NM →	
				RW36C						GP 3.00°	TCH 57

CATEGORY	A	B	C	D
RNP 0.11 DA	1040/40		333 (300-¾)	
RNP 0.30 DA	1143/50		436 (400-1)	

**AUTHORIZATION REQUIRED**

SE-2, 25 FEB 2021 to 25 MAR 2021

SE-2, 25 FEB 2021 to 25 MAR 2021