

WAAS CH 77500 W18A	APP CRS 183°	Rwy Idg TDZE Apt Elev	8676 748 748
--	------------------------	-----------------------------	---

RNAV (GPS) Y RWY 18L

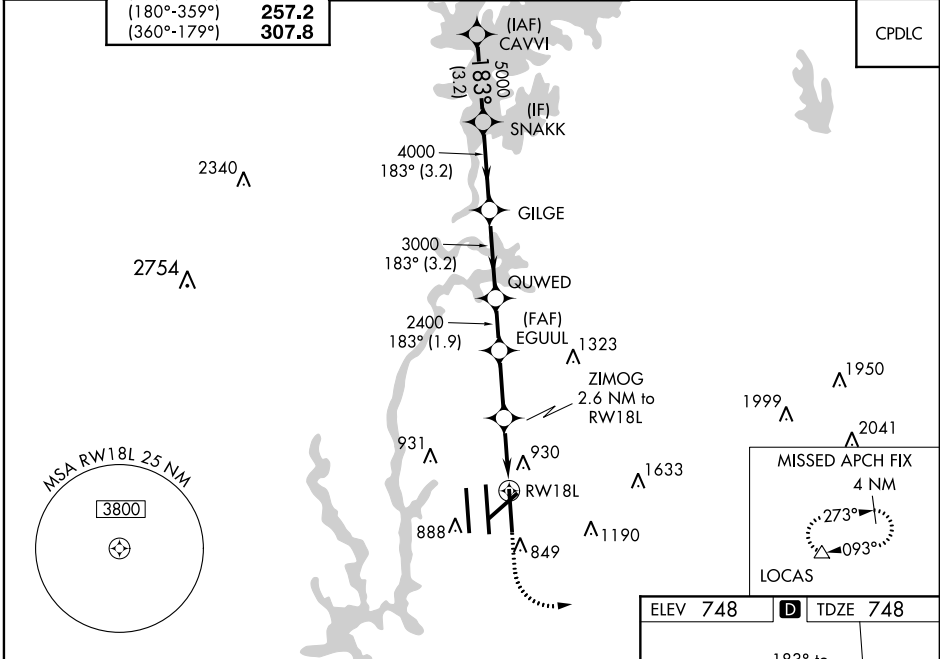
CHARLOTTE/DOUGLAS INTL (CLT)

RNP APCH.

- V** Circling NA at night. Simultaneous approach authorized. LNAV procedure NA during simultaneous operations. Use of FD or AP required during simultaneous operations.
- A** Rwy 18L helicopter visibility reduction below RVR 4000 NA. For uncompensated Baro-VNAV systems, LNAV/VNAV NA below -11°C or above 54°C.

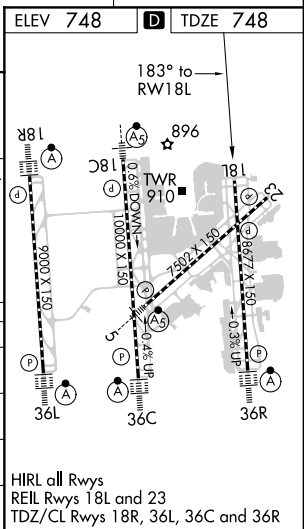
MISSED APPROACH: Climb to 1300 then climbing left turn to 4000 direct LOCAS and hold.

D-ATIS ARR 121.15 DEP 132.1	CHARLOTTE APP CON (001°-119°) 128.32 (120°-295°) 120.05 (296°-360°) 134.75 (180°-359°) 257.2 (360°-179°) 307.8	CHARLOTTE TOWER (Rwys 18L-36R, 5-23) 118.1 257.8 (Rwy 18C-36C) 126.4 257.8 (Rwy 18R-36L) 133.35 257.8	GND CON 121.8 348.6 (WEST) 121.9 348.6 (EAST)	CLNC DEL 127.15 348.6
---	--	---	---	---



VGSI and RNAV glidepath not coincident (VGSI Angle 3.00/TCH 76).

	CAVVI	SNAKK	GILGE	QUWED	EGUUL	ZIMOG	LOCAS
GP 3.00° TCH 56	6000	5000	4000	3000	2400	2400	1300 / 4000
		183°					
	→3.2 NM←	3.2 NM	3.2 NM	1.9 NM	→2.4 NM←	→1.5 NM←	→1.1 NM←
CATEGORY	A		B		C		D
LPV DA	1002/40		254 (300-¾)				
LNAV/VNAV DA	1216-1⅓		468 (500-1⅓)				
LNAV MDA	1180/55		432 (500-1)		1180-1¼		432 (500-1¼)
C CIRCLING	1380-1		632 (700-1)		1500-2¼		1500-2½
					752 (800-2¼)		752 (800-2½)



SE-2, 25 FEB 2021 to 25 MAR 2021

SE-2, 25 FEB 2021 to 25 MAR 2021