

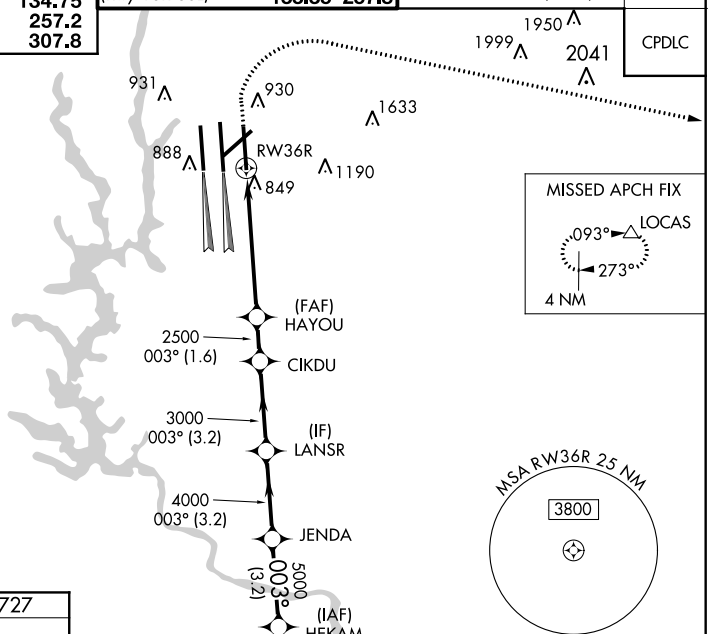
WAAS CH 90100 W36D	APP CRS 003°	Rwy Idg TDZE 727 Apt Elev 748	8390
--	------------------------	---	-------------

RNAV (GPS) Y RWY 36R

CHARLOTTE/DOUGLAS INTL (CLT)

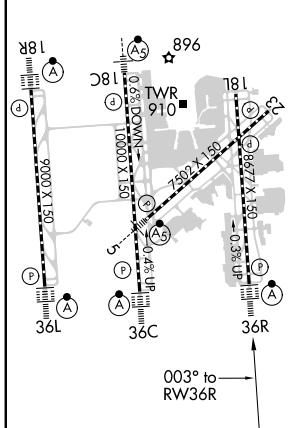
RNP APCH.	<p>⚠ Circling NA at night. For uncompensated Baro-VNAV systems, LNAV/VNAV NA below -11°C or above 54°C. Simultaneous approach authorized. Use of FD or AP required during simultaneous operations. LNAV procedure NA during simultaneous operations. For inop ALSF, increase LNAV/VNAV all Cats visibility to 1/2 mile.</p>	<p>ALSF-2 ⚠</p>	<p>MISSED APPROACH: Climb to 1320 then climbing right turn to 4000 direct LOCAS and hold.</p>
-----------	---	---------------------	---

D-ATIS	CHARLOTTE APP CON	CHARLOTTE TOWER	GND CON	CLNC DEL
ARR 121.15	(001°-119°) 128.32 (120°-295°) 120.05 (296°-360°) 134.75 (180°-359°) 257.2 (360°-179°) 307.8	(Rwys 18L-36R, 5-23) 118.1 257.8 (Rwy 18C-36C) 126.4 257.8 (Rwy 18R-36L) 133.35 257.8	121.8 348.6 (WEST) 121.9 348.6 (EAST)	127.15 348.6



ELEV 748	D	TDZE 727
-----------------	----------	-----------------

HIRL all Rwys
REIL Rwys 18L and 23
TDZ/CL Rwys 18R, 36L, 36C and 36R



1320	4000	LOCAS	VGSi and RNAV glidepath not coincident (VGSi Angle 3.00/TCH 74).				HEKAM
*LNAV only.		*1.6 NM to RWY 36R		2500		JENDA	HEKAM
1.6		3.8 NM		1.6 NM		3.2 NM	
CATEGORY		A		B		D	
LPV DA		927/18		200 (200-1/2)			
LNAV/VNAV DA		1229-1 1/4		502 (500-1 1/4)			
LNAV MDA		1320/24		593 (600-1/2)		1320-1 1/4 593 (600-1 1/4)	
C CIRCLING		1380-1		632 (700-1)		1500-2 1/4 752 (800-2 1/4) 1500-2 1/2 752 (800-2 1/2)	

SE-2, 25 FEB 2021 to 25 MAR 2021

SE-2, 25 FEB 2021 to 25 MAR 2021