

|  |                        |   |             |
|--|------------------------|---|-------------|
| WAAS<br>CH <b>70300</b><br><b>W05A</b> | APP CRS<br><b>055°</b> | Rwy Idg<br>TDZE <b>716</b><br>Apt Elev <b>748</b> | <b>7092</b> |
|--|------------------------|---|-------------|

# RNAV (GPS) Y RWY 5

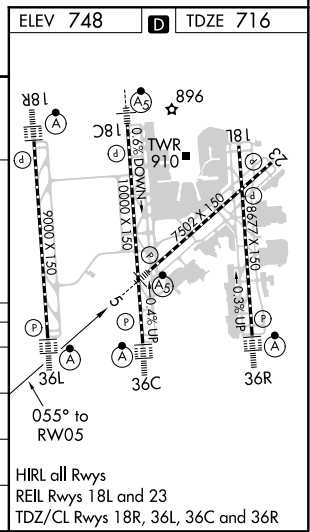
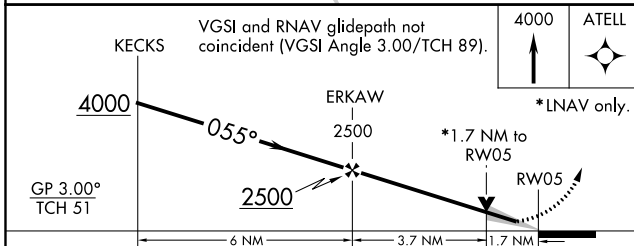
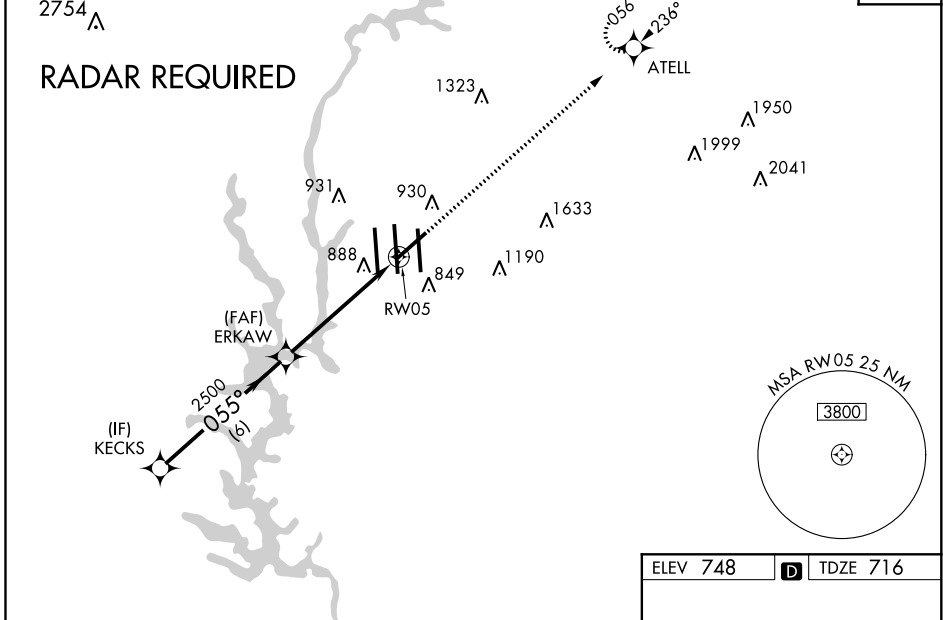
CHARLOTTE/DOUGLAS INTL (CLT)

**▼** Circling NA at night. For inop MALSR, increase LNAV/VNAV all Cats visibility to 1½ SM and LNAV Cat C/D visibility to 1¼ SM. For uncompensated Baro-VNAV systems, LNAV/VNAV NA below -16°C (4°F) or above 47°C (116°F). DME/DME RNP-0.3 NA. \*\* RVR 1800 authorized with use of FD or AP or HUD to DA.



**MISSED APPROACH:** Climb to 4000 direct ATELL and hold, continue climb-in-hold to 4000.

|   |  |   |   |   |
|---|--|---|---|---|
| D-ATIS<br>ARR <b>121.15</b><br>DEP <b>132.1</b> | CHARLOTTE APP CON<br>(001°-119°) <b>128.32</b><br>(120°-295°) <b>120.05</b><br>(296°-360°) <b>134.75</b><br>(180°-359°) <b>257.2</b><br>(360°-179°) <b>307.8</b> | CHARLOTTE TOWER<br>(Rwys 18L-36R, 5-23) <b>118.1 257.8</b><br>(Rwy 18C-36C) <b>126.4 257.8</b><br>(Rwy 18R-36L) <b>133.35 257.8</b> | GND CON<br><b>121.8 348.6</b> (WEST)<br><b>121.9 348.6</b> (EAST) | CLNC DEL<br><b>127.15</b><br><b>348.6</b> |
|---|--|---|---|---|



| CATEGORY          | A       | B           | C                       | D                       |
|-------------------|---------|-------------|-------------------------|-------------------------|
| LPV DA **         | 916/24  |             | 200 (200-½)             |                         |
| LNAV/VNAV DA      | 1229/55 |             | 513 (600-1)             |                         |
| LNAV MDA          | 1320/24 | 604 (700-½) | 1320/55                 | 604 (700-1)             |
| <b>C</b> CIRCLING | 1380-1  | 632 (700-1) | 1500-2¼<br>752 (800-2¼) | 1500-2½<br>752 (800-2½) |

SE-2, 25 FEB 2021 to 25 MAR 2021

SE-2, 25 FEB 2021 to 25 MAR 2021