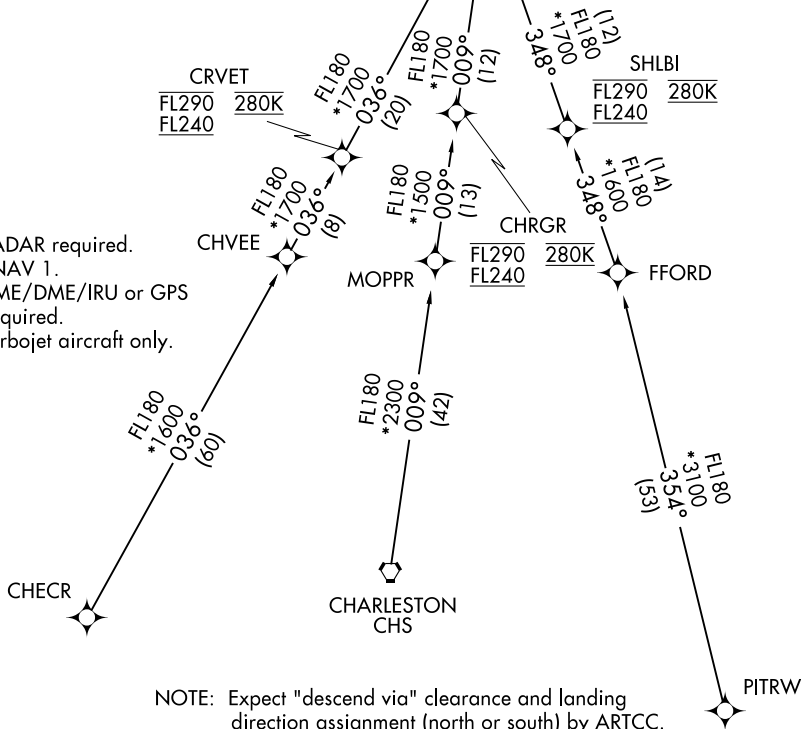
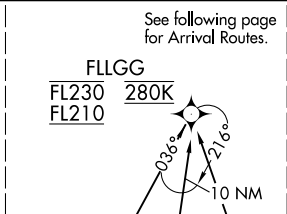


STOCR THREE ARRIVAL (RNAV) Transition Routes

CHARLOTTE APP CON  
126.15 282.325  
D-ATIS ARR  
121.15



NOTE: RADAR required.  
NOTE: RNAV 1.  
NOTE: DME/DME/IRU or GPS required.  
NOTE: Turbojet aircraft only.

NOTE: Expect "descend via" clearance and landing direction assignment (north or south) by ARTCC. For vertical navigation planning, landing south, select Rwy 23, landing north, select Rwy 36R.  
NOTE: Descend via mach number until intercepting 280K. Maintain 280K until slowed by the STAR or assigned by ATC.  
NOTE: CLT approach will assign landing runway.

NOTE: Chart not to scale.

CHARLESTON TRANSITION (CHS.STOCR3)  
CHECR TRANSITION (CHECR.STOCR3)  
PITRW TRANSITION (PITRW.STOCR3)

(CONTINUED ON FOLLOWING PAGES)

SE-2, 25 FEB 2021 to 25 MAR 2021

SE-2, 25 FEB 2021 to 25 MAR 2021