

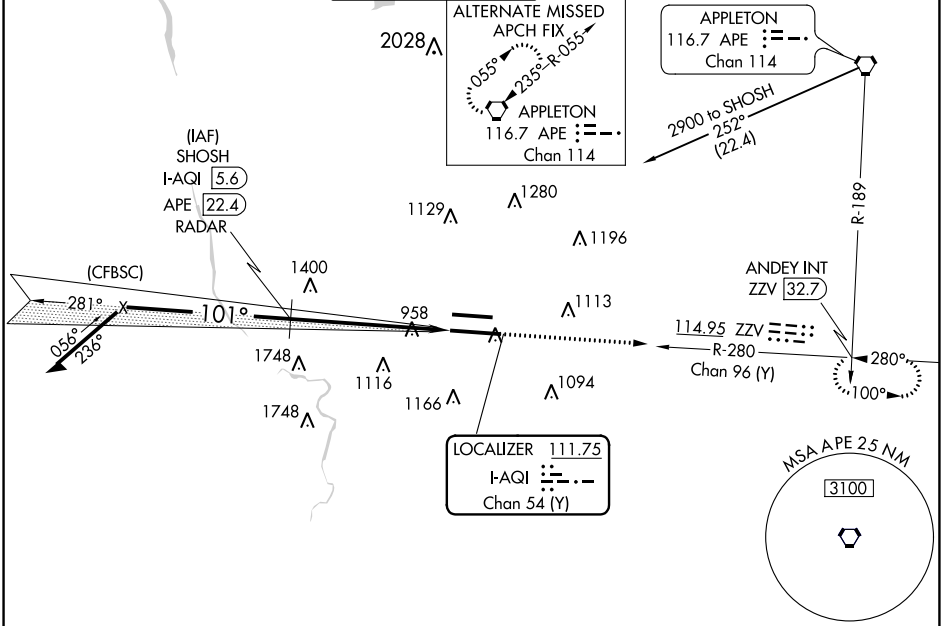
LOC/DME I-AQI 111.75 Chan 54 (Y)	APP CRS 101°	Rwy Idg 10113 TDZE 809 Apt Elev 815
--	------------------------	--

ILS RWY 10R (SA CAT I & II)
JOHN GLENN COLUMBUS INTL (CMH)

⚠ Simultaneous approach authorized. DME or radar required. SA CAT I: Requires specific OPSPEC, MSPEC, or LOA approval and use of HUD to DH. SA CAT II: Reduced lighting: requires specific OPSPEC, MSPEC, or LOA approval and use of AUTOLAND or HUD to touchdown.

MALSR MISSED APPROACH: Climb to 3000 on ZZY VOR/DME R-280 direct ANDEY INT/ZZV 32.7 DME and hold.

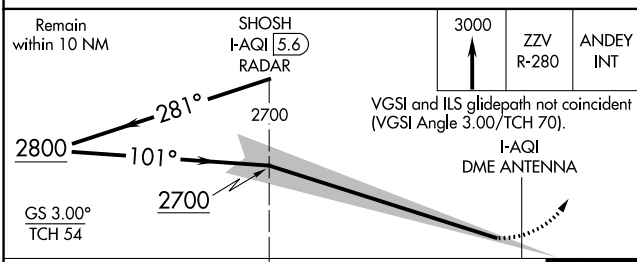
D-ATIS 124.6	COLUMBUS APP CON 125.95 371.975	COLUMBUS TOWER 132.7 257.8	GND CON 121.9 348.6	CLNC DEL 126.3	CPDLC
------------------------	---	--------------------------------------	-------------------------------	--------------------------	-------



EC-2, 25 FEB 2021 to 25 MAR 2021

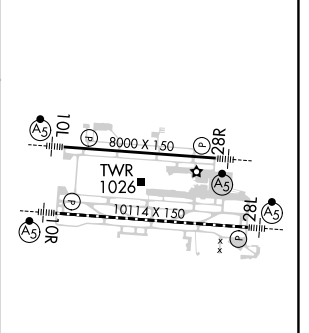
EC-2, 25 FEB 2021 to 25 MAR 2021

DME or RADAR REQUIRED



ELEV 815	D TDZE 809
----------	-------------------

CATEGORY	A	B	C	D
S-ILS 10R	SA CAT I	RA 146/14	150 DA 959	
S-ILS 10R	SA CAT II	RA 99/12	100 DA 909	



SA CATEGORY I & II ILS- SPECIAL AIRCREW & AIRCRAFT CERTIFICATION REQUIRED

TDZ/CL Rwy 10R-28L
HIRL Rwy 10R-28L and 10L-28R