

LOC/DME I-CMH <b>111.75</b> Chan <b>54 (Y)</b>	APP CRS <b>281°</b>	Rwy Idg <b>10113</b> TDZE <b>815</b> Apt Elev <b>815</b>
--	------------------------	---

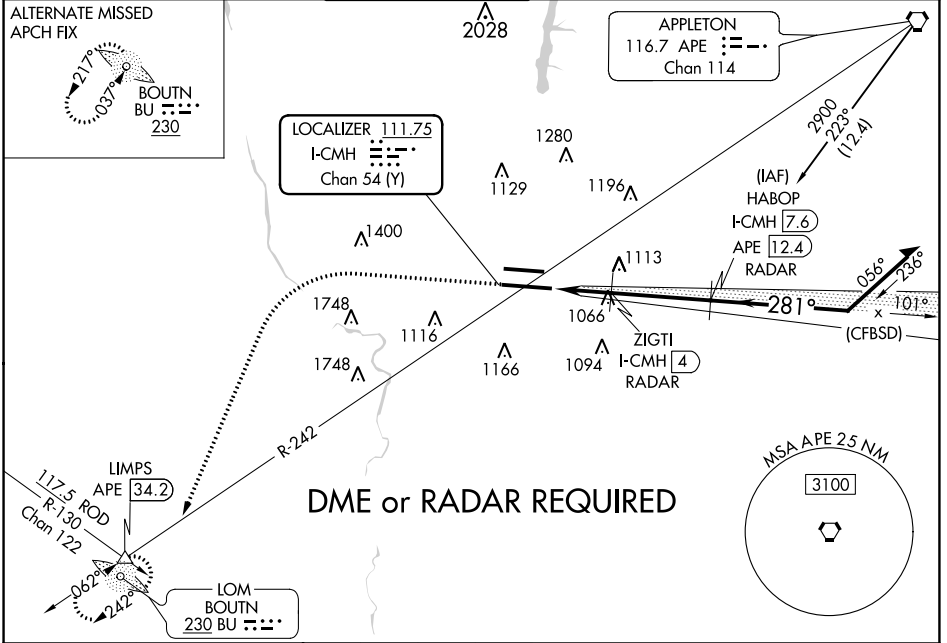
# ILS or LOC RWY 28L

JOHN GLENN COLUMBUS INTL (CMH)

**Simultaneous approach authorized.** For inoperative ALS, increase S-LOC 28L Cats C and D visibility to 2 SM and increase ZIGTI fix minimums S-LOC 28L Cats C and D visibility to 1 3/8 SM.

**MALSRS** MISSED APPROACH: Climb to 1400 then climbing left turn to 3000 on heading 210° and on APE VORTAC R-242 to LIMPS INT/ APE 34.2 DME and hold.

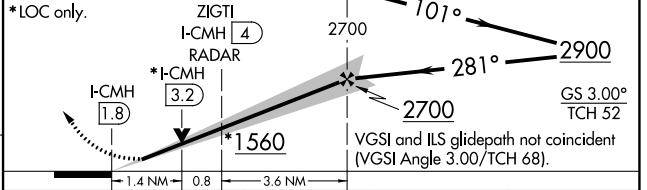
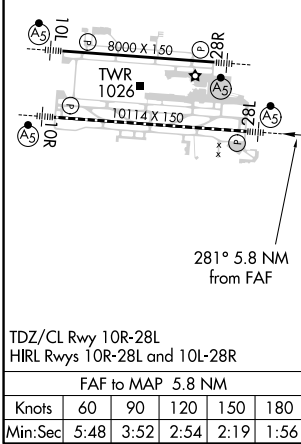
D-ATIS <b>124.6</b>	COLUMBUS APP CON <b>125.95 371.975</b>	COLUMBUS TOWER <b>132.7 257.8</b>	GND CON <b>121.9 348.6</b>	CLNC DEL <b>126.3</b>	CPDLC
------------------------	---	--------------------------------------	-------------------------------	--------------------------	-------



EC-2, 25 FEB 2021 to 25 MAR 2021

EC-2, 25 FEB 2021 to 25 MAR 2021

ELEV 815	<b>D</b> TDZE 815	1400	3000	APE R-242	LIMPS	HABOP I-CMH [7.6] RADAR	Remain within 10 NM
----------	-------------------	------	------	-----------	-------	-------------------------	---------------------



CATEGORY	A	B	C	D
S-ILS 28L	1015/18 200 (200-1/2)			
S-LOC 28L	1560/24	745 (800-1/2)	1560/40 745 (800-3/4)	1560-1 3/4 745 (800-1 3/4)
<b>C</b> CIRCLING	1560-1 745 (800-1)	1560-1 1/4 745 (800-1 1/4)	1560-2 1/4 745 (800-2 1/4)	1560-2 1/2 745 (800-2 1/2)
ZIGTI FIX MINIMUMS (DME OR RADAR REQUIRED)				
S-LOC 28L	1320/24	505 (600-1/2)	1320/55	505 (600-1)
<b>C</b> CIRCLING	1340-1	525 (600-1)	1520-2 705 (800-2)	1540-2 1/4 725 (800-2 1/4)